

**PANK1 Antibody (Center)**  
**Purified Rabbit Polyclonal Antibody (Pab)**  
**Catalog # AP7159b**

## Specification

---

### PANK1 Antibody (Center) - Product Information

Application	WB, IHC-P,E
Primary Accession	<a href="#">Q8TE04</a>
Other Accession	<a href="#">Q8K4K6</a>
Reactivity	Human
Predicted	Mouse
Host	Rabbit
Clonality	Polyclonal
Isotype	Rabbit IgG
Antigen Region	332-360

### PANK1 Antibody (Center) - Additional Information

**Gene ID** 53354

#### Other Names

Pantothenate kinase 1, hPanK, hPanK1, Pantothenic acid kinase 1, PANK1, PANK

#### Target/Specificity

This PANK1 antibody is generated from rabbits immunized with a KLH conjugated synthetic peptide between 332-360 amino acids from the Central region of human PANK1.

#### Dilution

WB~~1:1000

IHC-P~~1:50~100

#### Format

Purified polyclonal antibody supplied in PBS with 0.09% (W/V) sodium azide. This antibody is prepared by Saturated Ammonium Sulfate (SAS) precipitation followed by dialysis against PBS.

#### Storage

Maintain refrigerated at 2-8°C for up to 2 weeks. For long term storage store at -20°C in small aliquots to prevent freeze-thaw cycles.

#### Precautions

PANK1 Antibody (Center) is for research use only and not for use in diagnostic or therapeutic procedures.

### PANK1 Antibody (Center) - Protein Information

**Name** PANK1

**Synonyms** PANK

**Function** [Isoform 1]: Catalyzes the phosphorylation of pantothenate to generate 4'-phosphopantothenate in the first and rate-determining step of coenzyme A (CoA) synthesis.

**Cellular Location**

Cytoplasm. [Isoform 2]: Cytoplasm, cytosol. Cytoplasmic vesicle, clathrin-coated vesicle. Recycling endosome

**Tissue Location**

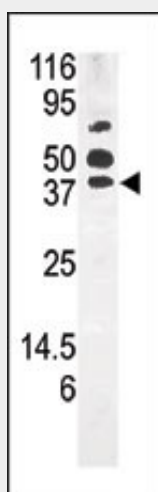
[Isoform 1]: Expressed at high levels in brain, heart, kidney, liver, skeletal muscle and testis

**PANK1 Antibody (Center) - Protocols**

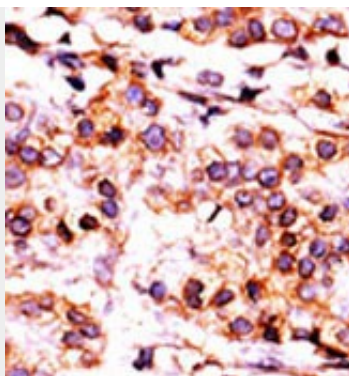
Provided below are standard protocols that you may find useful for product applications.

- [Western Blot](#)
- [Blocking Peptides](#)
- [Dot Blot](#)
- [Immunohistochemistry](#)
- [Immunofluorescence](#)
- [Immunoprecipitation](#)
- [Flow Cytometry](#)
- [Cell Culture](#)

**PANK1 Antibody (Center) - Images**



Western blot analysis of anti-PANK1 Pab (Cat. #AP7159b) in mouse kidney tissue lysate (35ug/lane). PANK1 (arrow) was detected using the purified Pab.



Formalin-fixed and paraffin-embedded human cancer tissue reacted with the primary antibody, which was peroxidase-conjugated to the secondary antibody, followed by AEC staining. This data demonstrates the use of this antibody for immunohistochemistry; clinical relevance has not been evaluated. BC = breast carcinoma; HC = hepatocarcinoma.

#### **PANK1 Antibody (Center) - Background**

PANK1 belongs to the pantothenate kinase family. Pantothenate kinase is a key regulatory enzyme in the biosynthesis of coenzyme A (CoA) in bacteria and mammalian cells. It catalyzes the first committed step in the universal biosynthetic pathway leading to CoA and is itself subject to regulation through feedback inhibition by CoA.

#### **PANK1 Antibody (Center) - References**

- Ramaswamy, G., et al., J. Lipid Res. 45(1):17-31 (2004).  
Ni, X., et al., Int. J. Biochem. Cell Biol. 34(2):109-115 (2002).  
Zhou, B., et al., Nat. Genet. 28(4):345-349 (2001).  
Westaway, S.K., et al., Int. J. Biochem. Cell Biol. 34 (12), 1629 (2002) (): ().  
Robishaw, J.D., et al., Am. J. Physiol. 248 (1 PT 1), E1-E9 (1985) (): ().