

PANK3 Antibody (N-term)
Purified Rabbit Polyclonal Antibody (Pab)
Catalog # AP7161a

Specification

PANK3 Antibody (N-term) - Product Information

Application	IHC-P, WB,E
Primary Accession	Q9H999
Other Accession	Q8R2W9 , Q08DA5
Reactivity	Human
Predicted	Bovine, Mouse
Host	Rabbit
Clonality	Polyclonal
Isotype	Rabbit IgG
Calculated MW	41094
Antigen Region	1-30

PANK3 Antibody (N-term) - Additional Information

Gene ID 79646

Other Names

Pantothenate kinase 3, hPank3, Pantothenic acid kinase 3, PANK3

Target/Specificity

This PANK3 antibody is generated from rabbits immunized with a KLH conjugated synthetic peptide between 1-30 amino acids from the N-terminal region of human PANK3.

Dilution

IHC-P~~1:50~100

WB~~1:1000

E~~Use at an assay dependent concentration.

Format

Purified polyclonal antibody supplied in PBS with 0.09% (W/V) sodium azide. This antibody is prepared by Saturated Ammonium Sulfate (SAS) precipitation followed by dialysis against PBS.

Storage

Maintain refrigerated at 2-8°C for up to 2 weeks. For long term storage store at -20°C in small aliquots to prevent freeze-thaw cycles.

Precautions

PANK3 Antibody (N-term) is for research use only and not for use in diagnostic or therapeutic procedures.

PANK3 Antibody (N-term) - Protein Information

Name PANK3

Function Catalyzes the phosphorylation of pantothenate to generate 4'-phosphopantothenate in the first and rate-determining step of coenzyme A (CoA) synthesis.

Cellular Location

Cytoplasm {ECO:0000269|PubMed:23152917, ECO:0000305}

Tissue Location

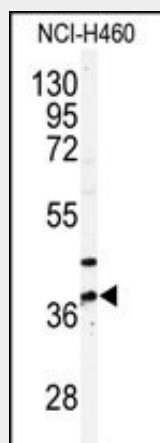
Highly expressed in the liver.

PANK3 Antibody (N-term) - Protocols

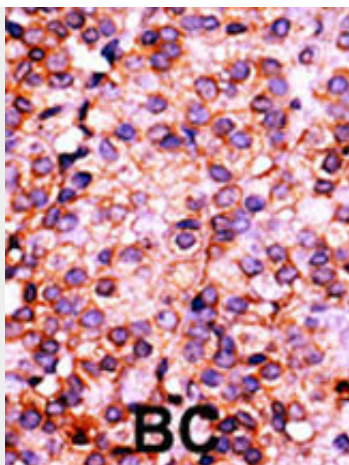
Provided below are standard protocols that you may find useful for product applications.

- [Western Blot](#)
- [Blocking Peptides](#)
- [Dot Blot](#)
- [Immunohistochemistry](#)
- [Immunofluorescence](#)
- [Immunoprecipitation](#)
- [Flow Cytometry](#)
- [Cell Culture](#)

PANK3 Antibody (N-term) - Images



Western blot analysis of anti-PANK3 Antibody (N-term) (Cat.#AP7161a) in NCI-H460 cell line lysates (35ug/lane). PANK3 (arrow) was detected using the purified Pab.



Formalin-fixed and paraffin-embedded human cancer tissue reacted with the primary antibody, which was peroxidase-conjugated to the secondary antibody, followed by AEC staining. This data demonstrates the use of this antibody for immunohistochemistry; clinical relevance has not been evaluated. BC = breast carcinoma; HC = hepatocarcinoma.

PANK3 Antibody (N-term) - Background

PANK3 belongs to the pantothenate kinase family. Pantothenate kinase is a key regulatory enzyme in the biosynthesis of coenzyme A (CoA) in bacteria and mammalian cells. It catalyzes the first committed step in the universal biosynthetic pathway leading to CoA and is itself subject to regulation through feedback inhibition by CoA. This family member is expressed most abundantly in the liver.

PANK3 Antibody (N-term) - References

Zhou, B., et al., Nat. Genet. 28(4):345-349 (2001).
Robishaw, J.D., et al., Am. J. Physiol. 248 (1 PT 1), E1-E9 (1985) (): ().