

ORC1 Polyclonal Antibody
Catalog # AP71652**Specification**

ORC1 Polyclonal Antibody - Product Information

Application	WB
Primary Accession	Q13415
Reactivity	Human
Host	Rabbit
Clonality	Polyclonal

ORC1 Polyclonal Antibody - Additional Information**Gene ID** 4998**Other Names**

ORC1; ORC1L; PARC1; Origin recognition complex subunit 1; Replication control protein 1

Dilution

WB~~Western Blot: 1/500 - 1/2000. ELISA: 1/5000. Not yet tested in other applications.

Format

Liquid in PBS containing 50% glycerol, 0.5% BSA and 0.09% (W/V) sodium azide.

Storage Conditions

-20°C

ORC1 Polyclonal Antibody - Protein Information**Name** ORC1**Synonyms** ORC1L, PARC1**Function**

Component of the origin recognition complex (ORC) that binds origins of replication. DNA-binding is ATP-dependent. The DNA sequences that define origins of replication have not been identified yet. ORC is required to assemble the pre-replication complex necessary to initiate DNA replication.

Cellular Location

Nucleus.

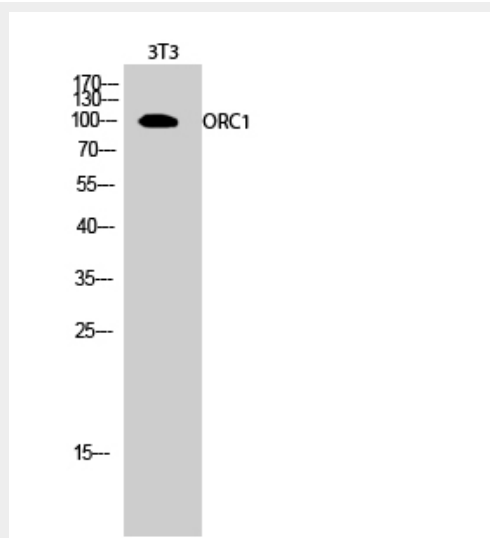
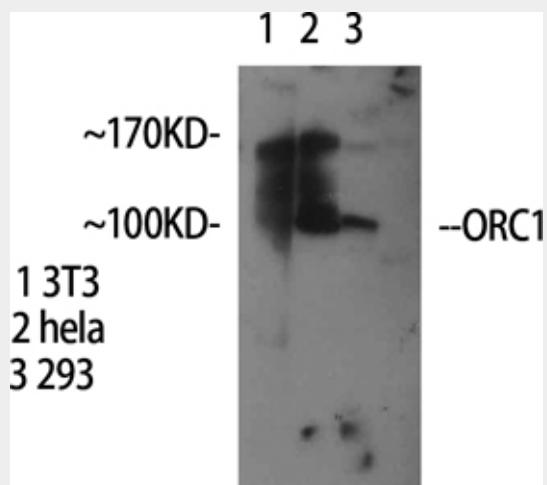
ORC1 Polyclonal Antibody - Protocols

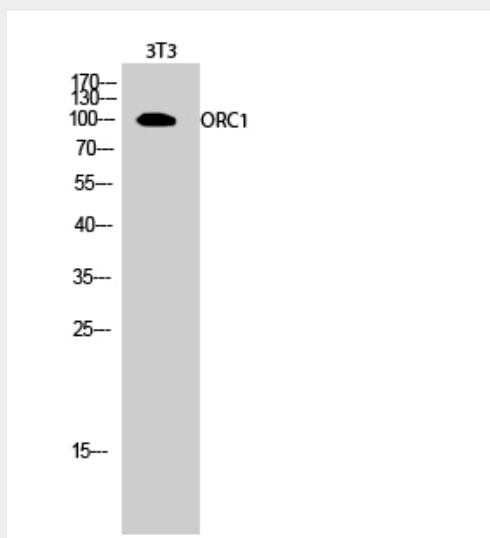
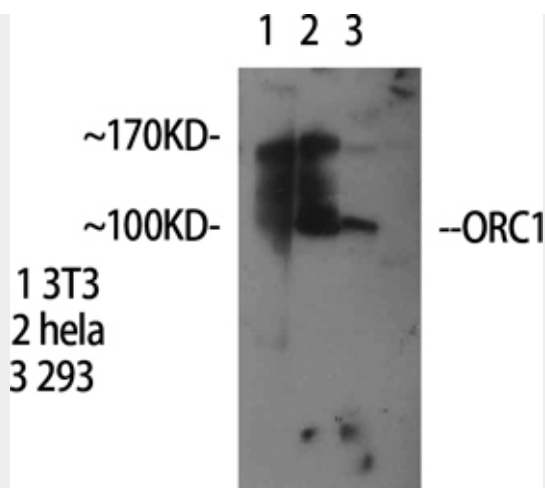
Provided below are standard protocols that you may find useful for product applications.

- [Western Blot](#)

- [Blocking Peptides](#)
- [Dot Blot](#)
- [Immunohistochemistry](#)
- [Immunofluorescence](#)
- [Immunoprecipitation](#)
- [Flow Cytometry](#)
- [Cell Culture](#)

ORC1 Polyclonal Antibody - Images





ORC1 Polyclonal Antibody - Background

Component of the origin recognition complex (ORC) that binds origins of replication. DNA-binding is ATP-dependent. The DNA sequences that define origins of replication have not been identified yet. ORC is required to assemble the pre-replication complex necessary to initiate DNA replication.