

p35 Polyclonal Antibody
Catalog # AP71693**Specification**

p35 Polyclonal Antibody - Product Information

Application	WB, IHC-P, IF
Primary Accession	Q15078
Reactivity	Human, Mouse, Rat
Host	Rabbit
Clonality	Polyclonal

p35 Polyclonal Antibody - Additional Information**Gene ID** 8851**Other Names**

CDK5R1; CDK5R; NCK5A; Cyclin-dependent kinase 5 activator 1; CDK5 activator 1; Cyclin-dependent kinase 5 regulatory subunit 1; TPKII regulatory subunit

DilutionWB~~Western Blot: 1/500 - 1/2000. Immunohistochemistry: 1/100 - 1/300. Immunofluorescence: 1/200 - 1/1000. ELISA: 1/20000. Not yet tested in other applications.
IHC-P~~N/A
IF~~1:50~200**Format**

Liquid in PBS containing 50% glycerol, 0.5% BSA and 0.09% (W/V) sodium azide.

Storage Conditions

-20°C

p35 Polyclonal Antibody - Protein Information**Name** CDK5R1**Synonyms** CDK5R, NCK5A**Function**

p35 is a neuron specific activator of CDK5. The complex p35/CDK5 is required for neurite outgrowth and cortical lamination. Involved in dendritic spine morphogenesis by mediating the EFNA1-EPHA4 signaling. Activator of TPKII. The complex p35/CDK5 participates in the regulation of the circadian clock by modulating the function of CLOCK protein: phosphorylates CLOCK at 'Thr-451' and 'Thr-461' and regulates the transcriptional activity of the CLOCK-BMAL1 heterodimer in association with altered stability and subcellular distribution.

Cellular Location

[Cyclin-dependent kinase 5 activator 1, p35]: Cell membrane; Lipid-anchor; Cytoplasmic side. Cell projection, neuron projection. Note=In the primary cortical neurons, p35 is present in the

peripheries and nerve terminals.

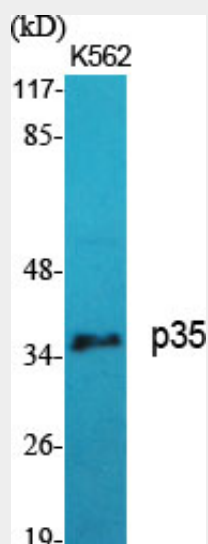
Tissue Location

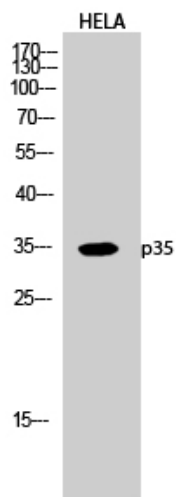
Brain and neuron specific.

p35 Polyclonal Antibody - Protocols

Provided below are standard protocols that you may find useful for product applications.

- [Western Blot](#)
- [Blocking Peptides](#)
- [Dot Blot](#)
- [Immunohistochemistry](#)
- [Immunofluorescence](#)
- [Immunoprecipitation](#)
- [Flow Cytometry](#)
- [Cell Culture](#)

p35 Polyclonal Antibody - Images



p35 Polyclonal Antibody - Background

p35 is a neuron specific activator of CDK5. The complex p35/CDK5 is required for neurite outgrowth and cortical lamination. Involved in dendritic spine morphogenesis by mediating the EFNA1-EPHA4 signaling. Activator of TPKII. The complex p35/CDK5 participates in the regulation of the circadian clock by modulating the function of CLOCK protein: phosphorylates CLOCK at 'Thr-451' and 'Thr-461' and regulates the transcriptional activity of the CLOCK-ARNTL/BMAL1 heterodimer in association with altered stability and subcellular distribution.