

p52 S6 kinase Polyclonal Antibody
Catalog # AP71706**Specification**

p52 S6 kinase Polyclonal Antibody - Product Information

Application	WB, IF
Primary Accession	Q96S38
Reactivity	Human, Mouse
Host	Rabbit
Clonality	Polyclonal

p52 S6 kinase Polyclonal Antibody - Additional Information**Gene ID** 26750**Other Names**

RPS6KC1; RPK118; Ribosomal protein S6 kinase delta-1; S6K-delta-1; 52 kDa ribosomal protein S6 kinase; Ribosomal S6 kinase-like protein with two PSK domains 118 kDa protein; SPHK1-binding protein

Dilution

WB~~Western Blot: 1/500 - 1/2000. Immunofluorescence: 1/200 - 1/1000. ELISA: 1/20000. Not yet tested in other applications.
IF~~1:50~200

Format

Liquid in PBS containing 50% glycerol, 0.5% BSA and 0.09% (W/V) sodium azide.

Storage Conditions

-20°C

p52 S6 kinase Polyclonal Antibody - Protein Information**Name** RPS6KC1**Synonyms** RPK118**Function**

May be involved in transmitting sphingosine-1 phosphate (SPP)-mediated signaling into the cell (PubMed:12077123). Plays a role in the recruitment of PRDX3 to early endosomes (PubMed:15750338).

Cellular Location

Cytoplasm. Membrane Early endosome

Tissue Location

Highly expressed in testis, skeletal muscle, brain, heart, placenta, kidney and liver and weakly

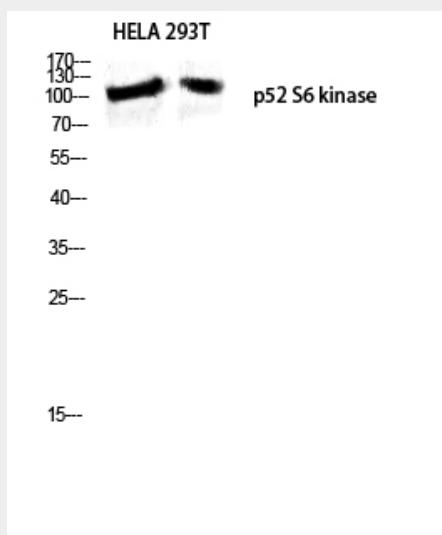
expressed in thymus, small intestine, lung and colon.

p52 S6 kinase Polyclonal Antibody - Protocols

Provided below are standard protocols that you may find useful for product applications.

- [Western Blot](#)
- [Blocking Peptides](#)
- [Dot Blot](#)
- [Immunohistochemistry](#)
- [Immunofluorescence](#)
- [Immunoprecipitation](#)
- [Flow Cytometry](#)
- [Cell Culture](#)

p52 S6 kinase Polyclonal Antibody - Images



Western blot analysis of HELA 293T lysis using p52 S6 kinase antibody. Antibody was diluted at 1:500

p52 S6 kinase Polyclonal Antibody - Background

May be involved in transmitting sphingosine-1 phosphate (SPP)-mediated signaling into the cell (PubMed:12077123). Plays a role in the recruitment of PRDX3 to early endosomes (PubMed:15750338).