

p70 S6 kinase β Polyclonal Antibody
Catalog # AP71742**Specification****p70 S6 kinase β Polyclonal Antibody - Product Information**

Application	WB, IHC-P
Primary Accession	Q9UBS0
Reactivity	Human, Mouse
Host	Rabbit
Clonality	Polyclonal

p70 S6 kinase β Polyclonal Antibody - Additional Information**Gene ID** 6199**Other Names**

RPS6KB2; STK14B; Ribosomal protein S6 kinase beta-2; S6K-beta-2; S6K2; 70 kDa ribosomal protein S6 kinase 2; P70S6K2; p70-S6K 2; S6 kinase-related kinase; SRK; Serine/threonine-protein kinase 14B; p70 ribosomal S6 kinase beta; S6K-beta; p70

Dilution

WB~~Western Blot: 1/500 - 1/2000. Immunohistochemistry: 1/100 - 1/300. ELISA: 1/5000. Not yet tested in other applications.

IHC-P~~N/A

Format

Liquid in PBS containing 50% glycerol, 0.5% BSA and 0.09% (W/V) sodium azide.

Storage Conditions

-20°C

p70 S6 kinase β Polyclonal Antibody - Protein Information**Name** RPS6KB2**Synonyms** STK14B**Function**

Phosphorylates specifically ribosomal protein S6 (PubMed:29750193). Seems to act downstream of mTOR signaling in response to growth factors and nutrients to promote cell proliferation, cell growth and cell cycle progression in an alternative pathway regulated by MEAK7 (PubMed:29750193).

Cellular Location

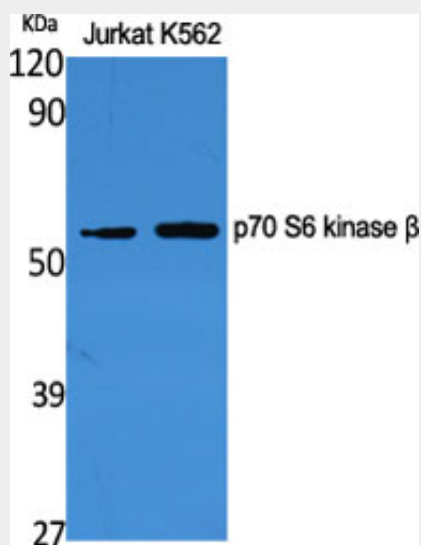
Cytoplasm. Nucleus.

p70 S6 kinase β Polyclonal Antibody - Protocols

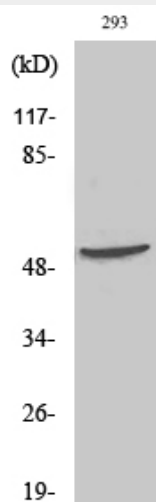
Provided below are standard protocols that you may find useful for product applications.

- [Western Blot](#)
- [Blocking Peptides](#)
- [Dot Blot](#)
- [Immunohistochemistry](#)
- [Immunofluorescence](#)
- [Immunoprecipitation](#)
- [Flow Cytometry](#)
- [Cell Culture](#)

p70 S6 kinase β Polyclonal Antibody - Images



Western Blot analysis of various cells using p70 S6 kinase β Polyclonal Antibody



Western Blot analysis of 293 cells using p70 S6 kinase β Polyclonal Antibody

p70 S6 kinase β Polyclonal Antibody - Background

Phosphorylates specifically ribosomal protein S6.