

Pdcd-4 Polyclonal Antibody
Catalog # AP71808**Specification**

Pdcd-4 Polyclonal Antibody - Product Information

Application	WB, IHC-P, IF
Primary Accession	Q53EL6
Reactivity	Human, Mouse, Rat
Host	Rabbit
Clonality	Polyclonal

Pdcd-4 Polyclonal Antibody - Additional Information**Gene ID** 27250**Other Names**PDCD4; H731; Programmed cell death protein 4; Neoplastic transformation inhibitor protein;
Nuclear antigen H731-like; Protein 197/15a**Dilution**WB~~Western Blot: 1/500 - 1/2000. Immunohistochemistry: 1/100 - 1/300. Immunofluorescence:
1/200 - 1/1000. ELISA: 1/20000. Not yet tested in other applications.
IHC-P~~N/A
IF~~1:50~200**Format**

Liquid in PBS containing 50% glycerol, 0.5% BSA and 0.09% (W/V) sodium azide.

Storage Conditions

-20°C

Pdcd-4 Polyclonal Antibody - Protein Information**Name** PDCD4**Synonyms** H731**Function**

Inhibits translation initiation and cap-dependent translation. May exert its function by hindering the interaction between EIF4A1 and EIF4G. Inhibits the helicase activity of EIF4A. Modulates the activation of JUN kinase. Down-regulates the expression of MAP4K1, thus inhibiting events important in driving invasion, namely, MAPK85 activation and consequent JUN-dependent transcription. May play a role in apoptosis. Tumor suppressor. Inhibits tumor promoter-induced neoplastic transformation. Binds RNA (By similarity).

Cellular LocationNucleus {ECO:0000250|UniProtKB:Q61823}. Cytoplasm {ECO:0000250|UniProtKB:Q61823}.
Note=Shuttles between the nucleus and cytoplasm (By similarity). Predominantly nuclear under

normal growth conditions, and when phosphorylated at Ser-457 (PubMed:16357133)

Tissue Location

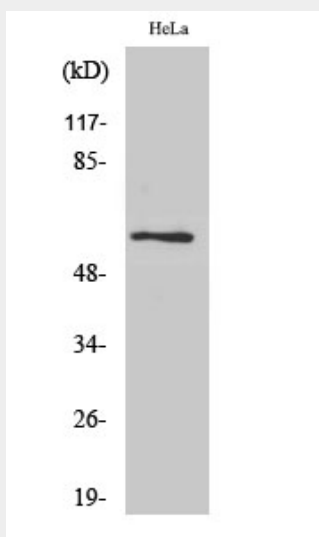
Up-regulated in proliferative cells. Highly expressed in epithelial cells of the mammary gland. Reduced expression in lung cancer and colon carcinoma.

Pdcd-4 Polyclonal Antibody - Protocols

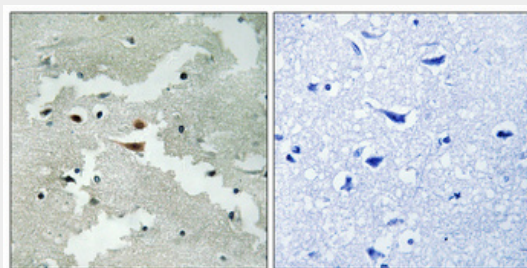
Provided below are standard protocols that you may find useful for product applications.

- [Western Blot](#)
- [Blocking Peptides](#)
- [Dot Blot](#)
- [Immunohistochemistry](#)
- [Immunofluorescence](#)
- [Immunoprecipitation](#)
- [Flow Cytometry](#)
- [Cell Culture](#)

Pdcd-4 Polyclonal Antibody - Images



Western Blot analysis of various cells using Pdcd-4 Polyclonal Antibody



Immunohistochemical analysis of paraffin-embedded Human brain. Antibody was diluted at 1:100(4°,overnight). High-pressure and temperature Tris-EDTA,pH8.0 was used for antigen retrieval. Negative contrl (right) obtained from antibody was pre-absorbed by immunogen peptide.

Pdcd-4 Polyclonal Antibody - Background

Inhibits translation initiation and cap-dependent translation. May exert its function by hindering the interaction between EIF4A1 and EIF4G. Inhibits the helicase activity of EIF4A. Modulates the activation of JUN kinase. Down-regulates the expression of MAP4K1, thus inhibiting events important in driving invasion, namely, MAPK85 activation and consequent JUN-dependent transcription. May play a role in apoptosis. Tumor suppressor. Inhibits tumor promoter-induced neoplastic transformation. Binds RNA (By similarity).