

Twinfilin-2 (PTK9L) Antibody (C-term)
Purified Rabbit Polyclonal Antibody (Pab)
Catalog # AP7180a**Specification**

Twinfilin-2 (PTK9L) Antibody (C-term) - Product Information

Application	WB,E
Primary Accession	Q6IBS0
Reactivity	Human
Host	Rabbit
Clonality	Polyclonal
Isotype	Rabbit IgG
Antigen Region	320-349

Twinfilin-2 (PTK9L) Antibody (C-term) - Additional Information**Gene ID** 11344**Other Names**

Twinfilin-2, A6-related protein, hA6RP, Protein tyrosine kinase 9-like, Twinfilin-1-like protein, TWF2, PTK9L

Target/Specificity

This Twinfilin-2 (PTK9L) antibody is generated from rabbits immunized with a KLH conjugated synthetic peptide between 320-349 amino acids from the C-terminal region of human Twinfilin-2 (PTK9L).

Dilution

WB~~1:1000

E~~Use at an assay dependent concentration.

Format

Purified polyclonal antibody supplied in PBS with 0.09% (W/V) sodium azide. This antibody is prepared by Saturated Ammonium Sulfate (SAS) precipitation followed by dialysis against PBS.

Storage

Maintain refrigerated at 2-8°C for up to 2 weeks. For long term storage store at -20°C in small aliquots to prevent freeze-thaw cycles.

Precautions

Twinfilin-2 (PTK9L) Antibody (C-term) is for research use only and not for use in diagnostic or therapeutic procedures.

Twinfilin-2 (PTK9L) Antibody (C-term) - Protein Information**Name** TWF2**Synonyms** PTK9L

Function Actin-binding protein involved in motile and morphological processes. Inhibits actin polymerization, likely by sequestering G-actin. By capping the barbed ends of filaments, it also regulates motility. Seems to play an important role in clathrin-mediated endocytosis and distribution of endocytic organelles. May play a role in regulating the mature length of the middle and short rows of stereocilia (By similarity).

Cellular Location

Cytoplasm, cytoskeleton. Cytoplasm, perinuclear region. Cell projection, stereocilium.
Note=Perinuclear and G-actin-rich cortical actin structure sublocalization

Tissue Location

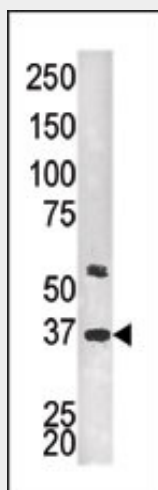
Ubiquitously expressed (at protein level).

Twinfilin-2 (PTK9L) Antibody (C-term) - Protocols

Provided below are standard protocols that you may find useful for product applications.

- [Western Blot](#)
- [Blocking Peptides](#)
- [Dot Blot](#)
- [Immunohistochemistry](#)
- [Immunofluorescence](#)
- [Immunoprecipitation](#)
- [Flow Cytometry](#)
- [Cell Culture](#)

Twinfilin-2 (PTK9L) Antibody (C-term) - Images



The anti-PTK9L Pab (Cat. #AP7180a) is used in Western blot to detect PTK9L in HEPG2 tissue lysate.

Twinfilin-2 (PTK9L) Antibody (C-term) - Background

The protein encoded by this gene was identified by its interaction with the catalytic domain of protein kinase C-zeta. The encoded protein contains an actin-binding site and an ATP-binding site. It is most closely related to twinfilin (PTK9), a conserved actin monomer-binding protein.

Twinfilin-2 (PTK9L) Antibody (C-term) - References

Rohwer, A., et al., Eur. J. Biochem. 263(2):518-525 (1999).

Twinfilin-2 (PTK9L) Antibody (C-term) - Citations

- [MyosinVIIa interacts with Twinfilin-2 at the tips of mechanosensory stereocilia in the inner ear.](#)