

**RBKS (RBSK) Antibody (N-term)**  
**Purified Rabbit Polyclonal Antibody (Pab)**  
**Catalog # AP7182a****Specification**

---

**RBKS (RBSK) Antibody (N-term) - Product Information**

Application	IHC-P, WB,E
Primary Accession	<a href="#">Q9H477</a>
Reactivity	Human
Host	Rabbit
Clonality	Polyclonal
Isotype	Rabbit IgG
Calculated MW	34143
Antigen Region	16-46

**RBKS (RBSK) Antibody (N-term) - Additional Information****Gene ID** 64080**Other Names**

Ribokinase, RBKS, RBSK

**Target/Specificity**

This RBKS (RBSK) antibody is generated from rabbits immunized with a KLH conjugated synthetic peptide between 16-46 amino acids from the N-terminal region of human RBKS (RBSK).

**Dilution**

IHC-P~~1:50~100

WB~~1:1000

E~~Use at an assay dependent concentration.

**Format**

Purified polyclonal antibody supplied in PBS with 0.09% (W/V) sodium azide. This antibody is prepared by Saturated Ammonium Sulfate (SAS) precipitation followed by dialysis against PBS.

**Storage**

Maintain refrigerated at 2-8°C for up to 2 weeks. For long term storage store at -20°C in small aliquots to prevent freeze-thaw cycles.

**Precautions**

RBKS (RBSK) Antibody (N-term) is for research use only and not for use in diagnostic or therapeutic procedures.

**RBKS (RBSK) Antibody (N-term) - Protein Information****Name** RBKS {ECO:0000255|HAMAP-Rule:MF\_03215}**Synonyms** RBSK

**Function** Catalyzes the phosphorylation of ribose at O-5 in a reaction requiring ATP and magnesium. The resulting D-ribose-5-phosphate can then be used either for sythesis of nucleotides, histidine, and tryptophan, or as a component of the pentose phosphate pathway.

**Cellular Location**

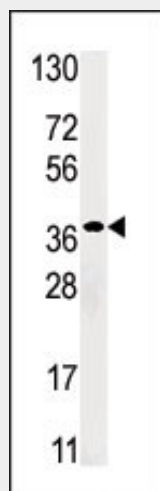
Cytoplasm {ECO:0000250|UniProtKB:P25332, ECO:0000255|HAMAP-Rule:MF\_03215}. Nucleus {ECO:0000250|UniProtKB:P25332, ECO:0000255|HAMAP-Rule:MF\_03215}

**RBKS (RBSK) Antibody (N-term) - Protocols**

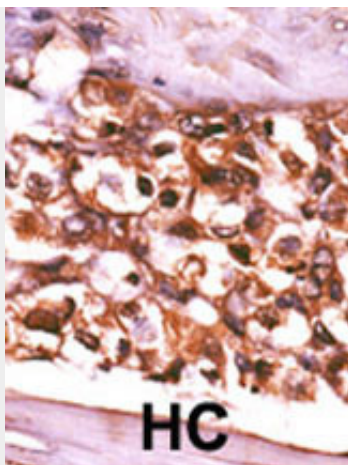
Provided below are standard protocols that you may find useful for product applications.

- [Western Blot](#)
- [Blocking Peptides](#)
- [Dot Blot](#)
- [Immunohistochemistry](#)
- [Immunofluorescence](#)
- [Immunoprecipitation](#)
- [Flow Cytometry](#)
- [Cell Culture](#)

**RBKS (RBSK) Antibody (N-term) - Images**



Western blot analysis of anti-RBSK Pab(Cat. #AP7182a) in HepG2 cell line lysate (35ug/lane). RBSK(arrow) was detected using the purified Pab.



Formalin-fixed and paraffin-embedded human cancer tissue reacted with the primary antibody, which was peroxidase-conjugated to the secondary antibody, followed by AEC staining. This data demonstrates the use of this antibody for immunohistochemistry; clinical relevance has not been evaluated. BC = breast carcinoma; HC = hepatocarcinoma.

#### **RBKS (RBSK) Antibody (N-term) - Background**

RBSK belongs to the pfkB family of carbohydrate kinases. It phosphorylates ribose to form ribose-5-phosphate in the presence of ATP and magnesium as a first step in ribose metabolism.

#### **RBKS (RBSK) Antibody (N-term) - References**

Bork, P., et al., Protein Sci. 2(1):31-40 (1993).