

**PDRG1 Polyclonal Antibody**  
Catalog # AP71831**Specification**

---

**PDRG1 Polyclonal Antibody - Product Information**

Application	WB, IHC-P
Primary Accession	<a href="#">O9NUG6</a>
Reactivity	Human, Mouse, Rat
Host	Rabbit
Clonality	Polyclonal

**PDRG1 Polyclonal Antibody - Additional Information****Gene ID** 81572**Other Names**

PDRG1; C20orf126; PDRG; p53 and DNA damage-regulated protein 1

**Dilution**

WB~~Western Blot: 1/500 - 1/2000. Immunohistochemistry: 1/100 - 1/300. ELISA: 1/40000. Not yet tested in other applications.

IHC-P~~N/A

**Format**

Liquid in PBS containing 50% glycerol, 0.5% BSA and 0.09% (W/V) sodium azide.

**Storage Conditions**

-20°C

**PDRG1 Polyclonal Antibody - Protein Information****Name** PDRG1**Synonyms** C20orf126, PDRG**Function**

May play a role in chaperone-mediated protein folding.

**Cellular Location**

Cytoplasm.

**Tissue Location**

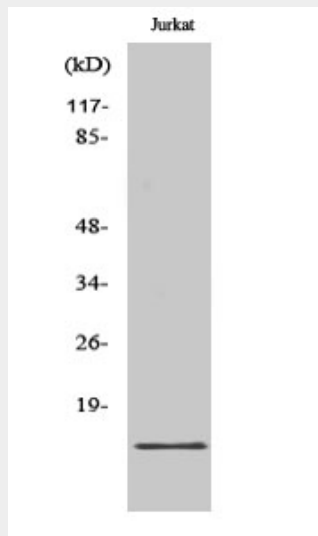
Predominantly expressed in normal testis and exhibits reduced but detectable expression in other organs

**PDRG1 Polyclonal Antibody - Protocols**

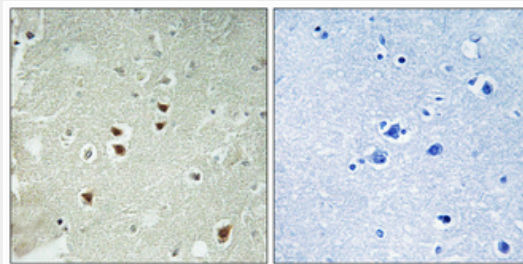
Provided below are standard protocols that you may find useful for product applications.

- [Western Blot](#)
- [Blocking Peptides](#)
- [Dot Blot](#)
- [Immunohistochemistry](#)
- [Immunofluorescence](#)
- [Immunoprecipitation](#)
- [Flow Cytometry](#)
- [Cell Culture](#)

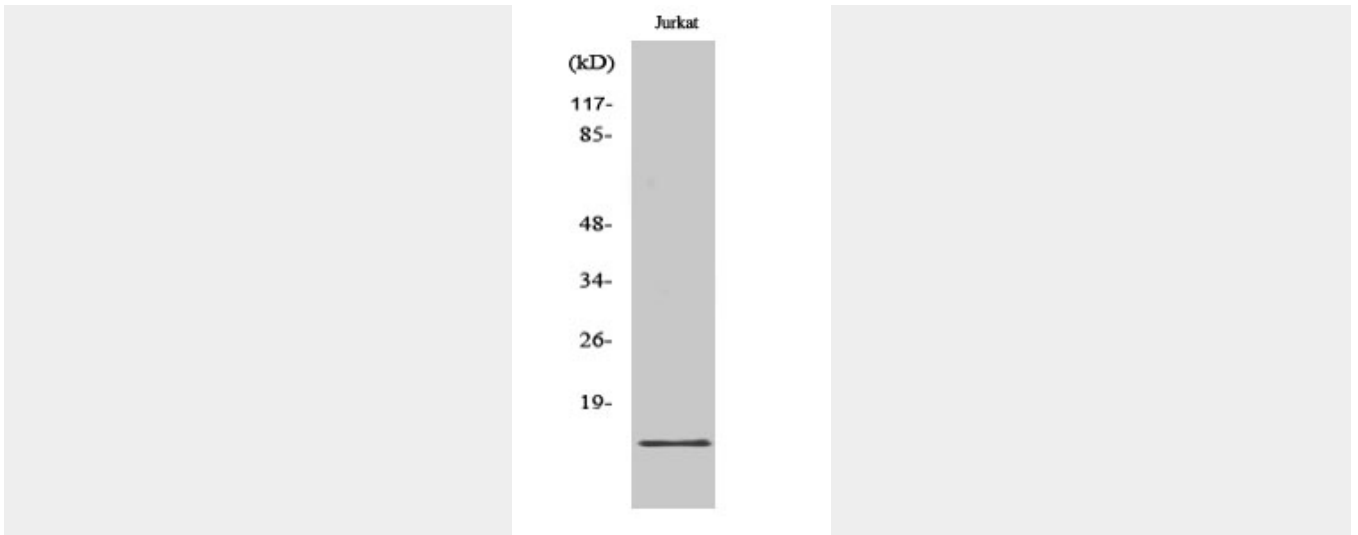
#### **PDRG1 Polyclonal Antibody - Images**



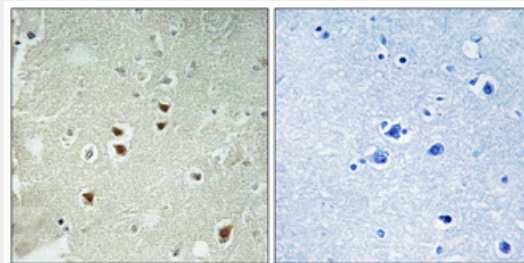
Western Blot analysis of various cells using PDRG1 Polyclonal Antibody



Immunohistochemical analysis of paraffin-embedded Human brain. Antibody was diluted at 1:100(4°,overnight). High-pressure and temperature Tris-EDTA,pH8.0 was used for antigen retrieval. Negative control (right) obtained from antibody was pre-absorbed by immunogen peptide.



Western Blot analysis of various cells using PDRG1 Polyclonal Antibody



Immunohistochemical analysis of paraffin-embedded Human brain. Antibody was diluted at 1:100(4°,overnight). High-pressure and temperature Tris-EDTA,pH8.0 was used for antigen retrieval. Negative control (right) obtained from antibody was pre-absorbed by immunogen peptide.

#### **PDRG1 Polyclonal Antibody - Background**

May play a role in chaperone-mediated protein folding.