

**PDZ-RhoGEF Polyclonal Antibody**  
**Catalog # AP71835****Specification**

---

**PDZ-RhoGEF Polyclonal Antibody - Product Information**

Application	WB
Primary Accession	<a href="#">O15085</a>
Reactivity	Human, Mouse, Rat
Host	Rabbit
Clonality	Polyclonal

**PDZ-RhoGEF Polyclonal Antibody - Additional Information****Gene ID** 9826**Other Names**

ARHGEF11; KIAA0380; Rho guanine nucleotide exchange factor 11; PDZ-RhoGEF

**Dilution**

WB~~Western Blot: 1/500 - 1/2000. ELISA: 1/5000. Not yet tested in other applications.

**Format**

Liquid in PBS containing 50% glycerol, 0.5% BSA and 0.09% (W/V) sodium azide.

**Storage Conditions**

-20°C

**PDZ-RhoGEF Polyclonal Antibody - Protein Information****Name** ARHGEF11**Synonyms** KIAA0380**Function**

May play a role in the regulation of RhoA GTPase by guanine nucleotide-binding alpha-12 (GNA12) and alpha-13 (GNA13). Acts as guanine nucleotide exchange factor (GEF) for RhoA GTPase and may act as GTPase-activating protein (GAP) for GNA12 and GNA13. Involved in neurotrophin-induced neurite outgrowth.

**Cellular Location**

Cytoplasm. Membrane. Note=Translocated to the membrane upon stimulation

**Tissue Location**

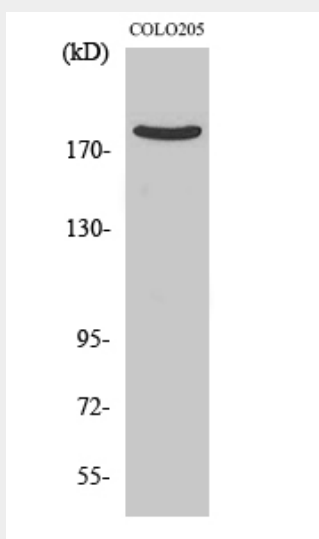
Ubiquitously expressed.

**PDZ-RhoGEF Polyclonal Antibody - Protocols**

Provided below are standard protocols that you may find useful for product applications.

- [Western Blot](#)
- [Blocking Peptides](#)
- [Dot Blot](#)
- [Immunohistochemistry](#)
- [Immunofluorescence](#)
- [Immunoprecipitation](#)
- [Flow Cytometry](#)
- [Cell Culture](#)

#### **PDZ-RhoGEF Polyclonal Antibody - Images**



#### **PDZ-RhoGEF Polyclonal Antibody - Background**

May play a role in the regulation of RhoA GTPase by guanine nucleotide-binding alpha-12 (GNA12) and alpha-13 (GNA13). Acts as guanine nucleotide exchange factor (GEF) for RhoA GTPase and may act as GTPase-activating protein (GAP) for GNA12 and GNA13. Involved in neurotrophin-induced neurite outgrowth.