

**PEG3 Polyclonal Antibody**  
**Catalog # AP71842****Specification**

---

**PEG3 Polyclonal Antibody - Product Information**

|                   |                        |
|-------------------|------------------------|
| Application       | WB                     |
| Primary Accession | <a href="#">Q9GZU2</a> |
| Reactivity        | Human                  |
| Host              | Rabbit                 |
| Clonality         | Polyclonal             |

**PEG3 Polyclonal Antibody - Additional Information****Gene ID** 5178**Other Names**

PEG3; KIAA0287; ZSCAN24; Paternally-expressed gene 3 protein; Zinc finger and SCAN domain-containing protein 24

**Dilution**

WB~~Western Blot: 1/500 - 1/2000. ELISA: 1/10000. Not yet tested in other applications.

**Format**

Liquid in PBS containing 50% glycerol, 0.5% BSA and 0.09% (W/V) sodium azide.

**Storage Conditions**

-20°C

**PEG3 Polyclonal Antibody - Protein Information****Name** PEG3**Synonyms** KIAA0287, ZSCAN24**Function**

Induces apoptosis in cooperation with SIAH1A. Acts as a mediator between p53/TP53 and BAX in a neuronal death pathway that is activated by DNA damage. Acts synergistically with TRAF2 and inhibits TNF induced apoptosis through activation of NF-kappa-B (By similarity). Possesses a tumor suppressing activity in glioma cells.

**Cellular Location**

Nucleus {ECO:0000255|PROSITE-ProRule:PRU00187}. Cytoplasm

**Tissue Location**

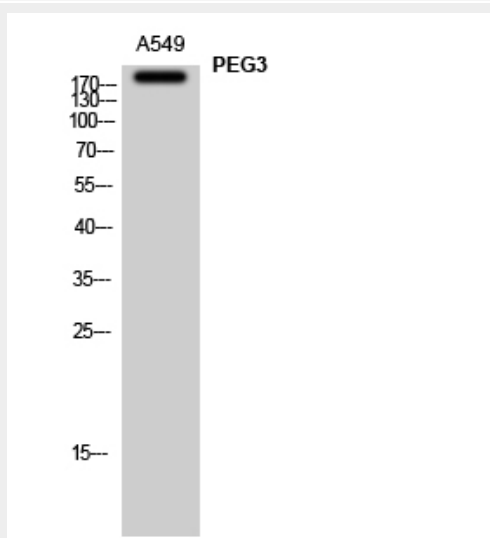
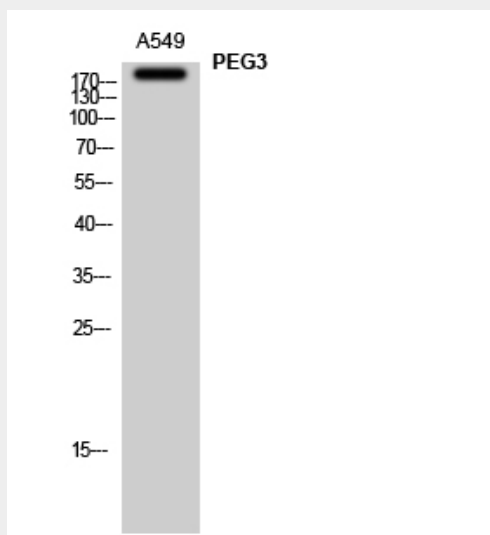
Brain, glial cells, astrocytes, embryo, placenta, testis, ovary and uterus. In the placenta it is found in the layer of villous cytotrophoblast cells while in the ovary it is found in the cells of the ovarian stroma including the thecal layers around the follicles. Expression is highly repressed in glioma cell lines

## PEG3 Polyclonal Antibody - Protocols

Provided below are standard protocols that you may find useful for product applications.

- [Western Blot](#)
- [Blocking Peptides](#)
- [Dot Blot](#)
- [Immunohistochemistry](#)
- [Immunofluorescence](#)
- [Immunoprecipitation](#)
- [Flow Cytometry](#)
- [Cell Culture](#)

## PEG3 Polyclonal Antibody - Images



## PEG3 Polyclonal Antibody - Background

Induces apoptosis in cooperation with SIAH1A. Acts as a mediator between p53/TP53 and BAX in a neuronal death pathway that is activated by DNA damage. Acts synergistically with TRAF2 and inhibits TNF induced apoptosis through activation of NF-kappa-B (By similarity). Possesses a tumor suppressing activity in glioma cells.