

Periphilin 1 Polyclonal Antibody
Catalog # AP71848**Specification****Periphilin 1 Polyclonal Antibody - Product Information**

Application	WB, IHC-P
Primary Accession	Q8NEY8
Reactivity	Human, Mouse
Host	Rabbit
Clonality	Polyclonal

Periphilin 1 Polyclonal Antibody - Additional Information**Gene ID** 51535**Other Names**

PPHLN1; HSPC206; HSPC232; Periphilin-1; Gastric cancer antigen Ga50

Dilution

WB~~Western Blot: 1/500 - 1/2000. Immunohistochemistry: 1/100 - 1/300. ELISA: 1/5000. Not yet tested in other applications.

IHC-P~~N/A

Format

Liquid in PBS containing 50% glycerol, 0.5% BSA and 0.09% (W/V) sodium azide.

Storage Conditions

-20°C

Periphilin 1 Polyclonal Antibody - Protein Information**Name** PPHLN1 ([HGNC:19369](#))**Function**

Component of the HUSH complex, a multiprotein complex that mediates epigenetic repression. The HUSH complex is recruited to genomic loci rich in H3K9me3 and is probably required to maintain transcriptional silencing by promoting recruitment of SETDB1, a histone methyltransferase that mediates further deposition of H3K9me3. In the HUSH complex, contributes to the maintenance of the complex at chromatin (PubMed:26022416). Acts as a transcriptional corepressor and regulates the cell cycle, probably via the HUSH complex (PubMed:15474462, PubMed:17963697). The HUSH complex is also involved in the silencing of unintegrated retroviral DNA: some part of the retroviral DNA formed immediately after infection remains unintegrated in the host genome and is transcriptionally repressed (PubMed:30487602). May be involved in epithelial differentiation by contributing to epidermal integrity and barrier formation (PubMed:30487602).

href="http://www.uniprot.org/citations/12853457" target="_blank">12853457).

Cellular Location

Nucleus. Cytoplasm. Chromosome. Note=In undifferentiated keratinocytes expressed in speckle-type nuclear granules and at the nuclear membrane, but in the differentiated keratinocytes colocalized with periplakin at the cell periphery and at cell-cell junctions (PubMed:12853457) Localizes to chromatin (PubMed:26022416).

Tissue Location

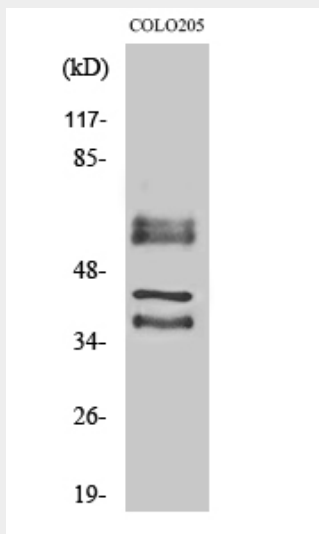
Ubiquitous..

Periphilin 1 Polyclonal Antibody - Protocols

Provided below are standard protocols that you may find useful for product applications.

- [Western Blot](#)
- [Blocking Peptides](#)
- [Dot Blot](#)
- [Immunohistochemistry](#)
- [Immunofluorescence](#)
- [Immunoprecipitation](#)
- [Flow Cytometry](#)
- [Cell Culture](#)

Periphilin 1 Polyclonal Antibody - Images



Periphilin 1 Polyclonal Antibody - Background

Component of the HUSH complex, a multiprotein complex that mediates epigenetic repression. The HUSH complex is recruited to genomic loci rich in H3K9me3 and is probably required to maintain transcriptional silencing by promoting recruitment of SETDB1, a histone methyltransferase that mediates further deposition of H3K9me3. In the HUSH complex, contributes to the maintenance of the complex at chromatin (PubMed:26022416). Acts as a transcriptional corepressor and regulates the cell cycle, probably via the HUSH complex (PubMed:15474462, PubMed:17963697). May be involved in epithelial differentiation by contributing to epidermal

integrity and barrier formation (Probable).