

**Peropsin Polyclonal Antibody**  
**Catalog # AP71851****Specification**

---

**Peropsin Polyclonal Antibody - Product Information**

|                   |                        |
|-------------------|------------------------|
| Application       | WB, IHC-P              |
| Primary Accession | <a href="#">O14718</a> |
| Reactivity        | Human                  |
| Host              | Rabbit                 |
| Clonality         | Polyclonal             |

**Peropsin Polyclonal Antibody - Additional Information****Gene ID** 10692**Other Names**

RRH; Visual pigment-like receptor peropsin

**Dilution**WB~~Western Blot: 1/500 - 1/2000. ELISA: 1/10000. Not yet tested in other applications.  
IHC-P~~N/A**Format**

Liquid in PBS containing 50% glycerol, 0.5% BSA and 0.09% (W/V) sodium azide.

**Storage Conditions**

-20°C

**Peropsin Polyclonal Antibody - Protein Information****Name** RRH**Function**

May play a role in rpe physiology either by detecting light directly or by monitoring the concentration of retinoids or other photoreceptor-derived compounds.

**Cellular Location**

Membrane; Multi-pass membrane protein

**Tissue Location**

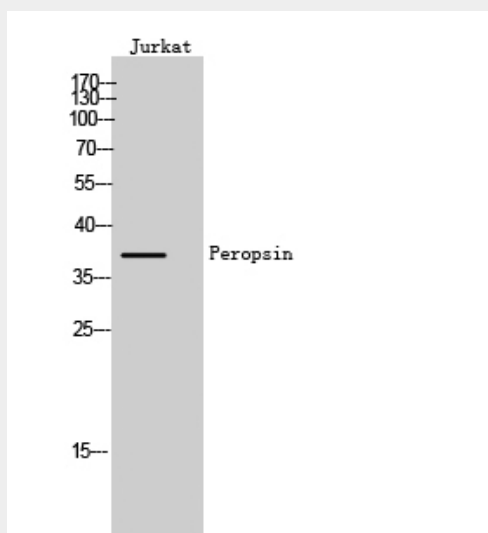
Found only in the eye, where it is localized to the retinal pigment epithelium (RPE). In the RPE, it is localized to the microvilli that surround the photoreceptor outer segments

**Peropsin Polyclonal Antibody - Protocols**

Provided below are standard protocols that you may find useful for product applications.

- [Western Blot](#)
- [Blocking Peptides](#)
- [Dot Blot](#)
- [Immunohistochemistry](#)
- [Immunofluorescence](#)
- [Immunoprecipitation](#)
- [Flow Cytometry](#)
- [Cell Culture](#)

#### Peropsin Polyclonal Antibody - Images



Western Blot analysis of Jurkat cells using Peropsin Polyclonal Antibody

#### Peropsin Polyclonal Antibody - Background

May play a role in rpe physiology either by detecting light directly or by monitoring the concentration of retinoids or other photoreceptor-derived compounds.