

**pHyde Polyclonal Antibody**  
**Catalog # AP71890****Specification****pHyde Polyclonal Antibody - Product Information**

Application	WB
Primary Accession	<a href="#">Q658P3</a>
Reactivity	Human, Mouse, Rat
Host	Rabbit
Clonality	Polyclonal

**pHyde Polyclonal Antibody - Additional Information****Gene ID** 55240**Other Names**

STEAP3; TSAP6; Metalloreductase STEAP3; Dudulin-2; Six-transmembrane epithelial antigen of prostate 3; Tumor suppressor-activated pathway protein 6; hTSAP6; pHyde; hpHyde

**Dilution**

WB~~Western Blot: 1/500 - 1/2000. Immunohistochemistry: 1/100 - 1/300. Immunofluorescence: 1/200 - 1/1000. ELISA: 1/10000. Not yet tested in other applications.

**Format**

Liquid in PBS containing 50% glycerol, 0.5% BSA and 0.09% (W/V) sodium azide.

**Storage Conditions**

-20°C

**pHyde Polyclonal Antibody - Protein Information****Name** STEAP3**Synonyms** TSAP6**Function**

Integral membrane protein that functions as a NADPH-dependent ferric-chelate reductase, using NADPH from one side of the membrane to reduce a Fe(3+) chelate that is bound on the other side of the membrane (PubMed:<a href="http://www.uniprot.org/citations/26205815" target="\_blank">26205815</a>). Mediates sequential transmembrane electron transfer from NADPH to FAD and onto heme, and finally to the Fe(3+) chelate (By similarity). Can also reduce Cu(2+) to Cu(1+) (By similarity). Mediates efficient transferrin-dependent iron uptake in erythroid cells (By similarity). May play a role downstream of p53/TP53 to interface apoptosis and cell cycle progression (By similarity). Indirectly involved in exosome secretion by facilitating the secretion of proteins such as TCTP (PubMed:<a href="http://www.uniprot.org/citations/15319436" target="\_blank">15319436</a>, PubMed:<a href="http://www.uniprot.org/citations/16651434" target="\_blank">16651434</a>).

**Cellular Location**

Endosome membrane {ECO:0000250|UniProtKB:Q8CI59}; Multi-pass membrane protein.

Note=Localizes to vesicular- like structures at the plasma membrane and around the nucleus

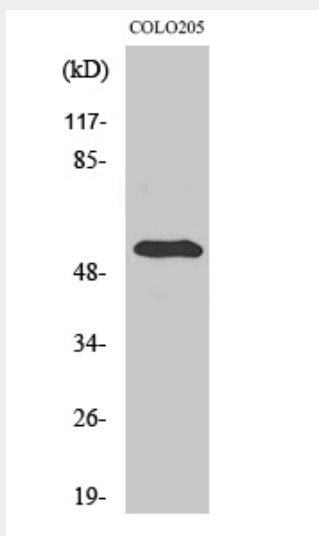
**Tissue Location**

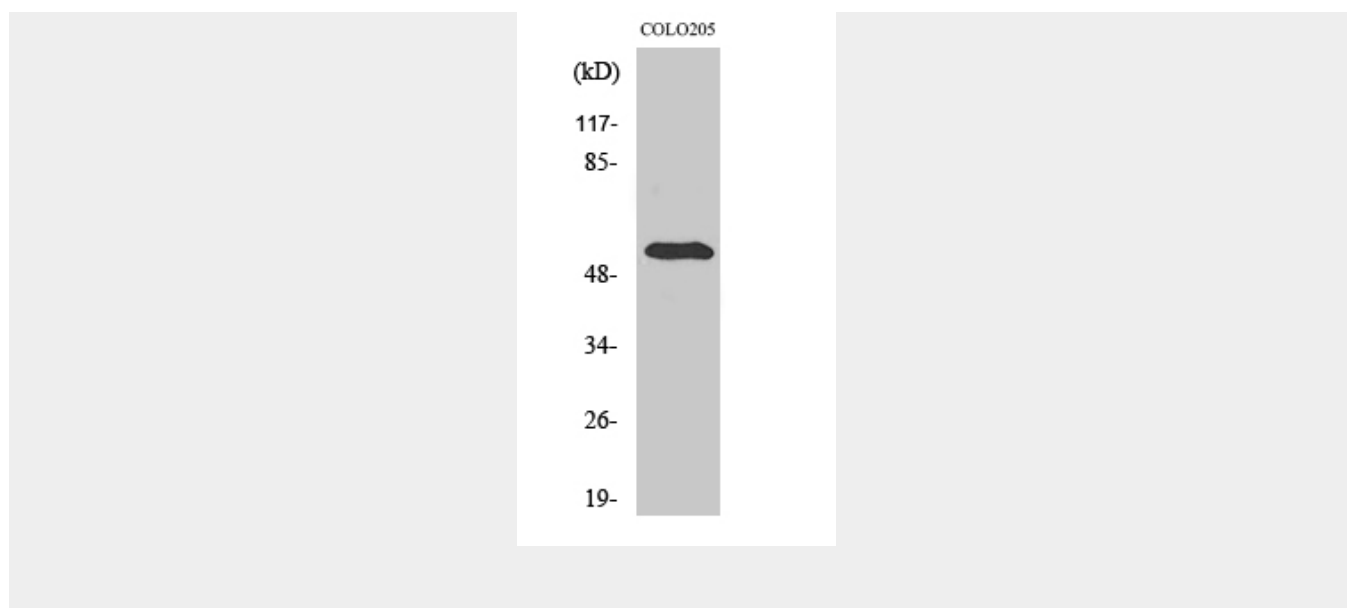
Expressed in adult bone marrow, placenta, liver, skeletal muscle and pancreas. Down-regulated in hepatocellular carcinoma.

**pHyde Polyclonal Antibody - Protocols**

Provided below are standard protocols that you may find useful for product applications.

- [Western Blot](#)
- [Blocking Peptides](#)
- [Dot Blot](#)
- [Immunohistochemistry](#)
- [Immunofluorescence](#)
- [Immunoprecipitation](#)
- [Flow Cytometry](#)
- [Cell Culture](#)

**pHyde Polyclonal Antibody - Images**



### **pHyde Polyclonal Antibody - Background**

Endosomal ferrireductase required for efficient transferrin-dependent iron uptake in erythroid cells. Participates in erythroid iron homeostasis by reducing Fe(3+) to Fe(2+). Can also reduce of Cu(2+) to Cu(1+), suggesting that it participates in copper homeostasis. Uses NADP(+) as acceptor. May play a role downstream of p53/TP53 to interface apoptosis and cell cycle progression. Indirectly involved in exosome secretion by facilitating the secretion of proteins such as TCTP.