

**PI 3-kinase p85 $\beta$  Polyclonal Antibody**  
**Catalog # AP71898****Specification****PI 3-kinase p85 $\beta$  Polyclonal Antibody - Product Information**

Application	WB
Primary Accession	<a href="#">O00459</a>
Reactivity	Human, Mouse, Rat
Host	Rabbit
Clonality	Polyclonal

**PI 3-kinase p85 $\beta$  Polyclonal Antibody - Additional Information****Gene ID** 5296**Other Names**

PIK3R2; Phosphatidylinositol 3-kinase regulatory subunit beta; PI3-kinase regulatory subunit beta; PI3K regulatory subunit beta; PtdIns-3-kinase regulatory subunit beta; Phosphatidylinositol 3-kinase 85 kDa regulatory subunit beta; PI3-kinase

**Dilution**

WB~~Western Blot: 1/500 - 1/2000. ELISA: 1/10000. Not yet tested in other applications.

**Format**

Liquid in PBS containing 50% glycerol, 0.5% BSA and 0.09% (W/V) sodium azide.

**Storage Conditions**

-20°C

**PI 3-kinase p85 $\beta$  Polyclonal Antibody - Protein Information****Name** PIK3R2**Function**

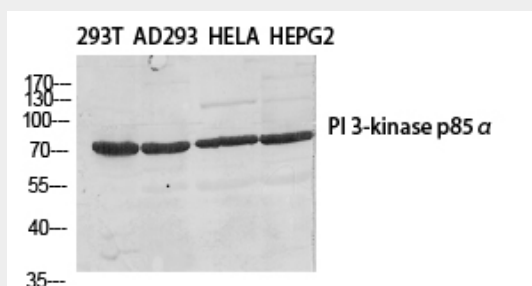
Regulatory subunit of phosphoinositide-3-kinase (PI3K), a kinase that phosphorylates PtdIns(4,5)P<sub>2</sub> (Phosphatidylinositol 4,5- biphosphate) to generate phosphatidylinositol 3,4,5-trisphosphate (PIP<sub>3</sub>). PIP<sub>3</sub> plays a key role by recruiting PH domain-containing proteins to the membrane, including AKT1 and PDK1, activating signaling cascades involved in cell growth, survival, proliferation, motility and morphology. Binds to activated (phosphorylated) protein- tyrosine kinases, through its SH2 domain, and acts as an adapter, mediating the association of the p110 catalytic unit to the plasma membrane. Indirectly regulates autophagy (PubMed:<a href="http://www.uniprot.org/citations/23604317" target="\_blank">23604317</a>). Promotes nuclear translocation of XBP1 isoform 2 in a ER stress- and/or insulin- dependent manner during metabolic overloading in the liver and hence plays a role in glucose tolerance improvement (By similarity).

## PI 3-kinase p85 $\beta$ Polyclonal Antibody - Protocols

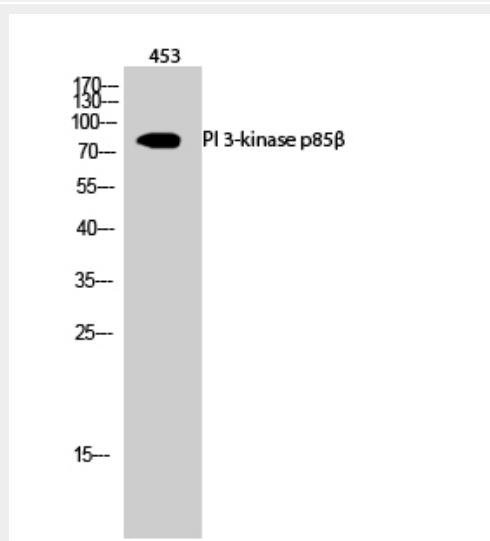
Provided below are standard protocols that you may find useful for product applications.

- [Western Blot](#)
- [Blocking Peptides](#)
- [Dot Blot](#)
- [Immunohistochemistry](#)
- [Immunofluorescence](#)
- [Immunoprecipitation](#)
- [Flow Cytometry](#)
- [Cell Culture](#)

## PI 3-kinase p85 $\beta$ Polyclonal Antibody - Images



Western Blot analysis of various cells using PI 3-kinase p85 $\beta$  Polyclonal Antibody diluted at 1:500



Western Blot analysis of 453 cells using PI 3-kinase p85 $\beta$  Polyclonal Antibody diluted at 1:500

## PI 3-kinase p85 $\beta$ Polyclonal Antibody - Background

Regulatory subunit of phosphoinositide-3-kinase (PI3K), a kinase that phosphorylates PtdIns(4,5)P<sub>2</sub> (Phosphatidylinositol 4,5-bisphosphate) to generate phosphatidylinositol 3,4,5- trisphosphate (PIP<sub>3</sub>). PIP<sub>3</sub> plays a key role by recruiting PH domain-containing proteins to the membrane, including AKT1 and PDK1, activating signaling cascades involved in cell growth, survival, proliferation, motility and morphology. Binds to activated (phosphorylated) protein-tyrosine kinases, through its SH2 domain, and acts as an adapter, mediating the association of the p110 catalytic unit to the plasma membrane. Indirectly regulates autophagy (PubMed:23604317). Promotes nuclear translocation of XBP1 isoform 2 in a ER stress- and/or insulin- dependent manner during metabolic overloading in

the liver and hence plays a role in glucose tolerance improvement (By similarity).