

PKA I β reg Polyclonal Antibody
Catalog # AP71930**Specification**

PKA I β reg Polyclonal Antibody - Product Information

Application	WB, IHC-P
Primary Accession	P31321
Reactivity	Human, Mouse, Rat
Host	Rabbit
Clonality	Polyclonal

PKA I β reg Polyclonal Antibody - Additional Information**Gene ID** 5575**Other Names**

PRKAR1B; cAMP-dependent protein kinase type I-beta regulatory subunit

Dilution

WB~~Western Blot: 1/500 - 1/2000. Immunohistochemistry: 1/100 - 1/300. ELISA: 1/20000. Not yet tested in other applications.

IHC-P~~N/A

Format

Liquid in PBS containing 50% glycerol, 0.5% BSA and 0.09% (W/V) sodium azide.

Storage Conditions

-20°C

PKA I β reg Polyclonal Antibody - Protein Information**Name** PRKAR1B**Function**

Regulatory subunit of the cAMP-dependent protein kinases involved in cAMP signaling in cells.

Cellular Location

Cell membrane.

Tissue Location

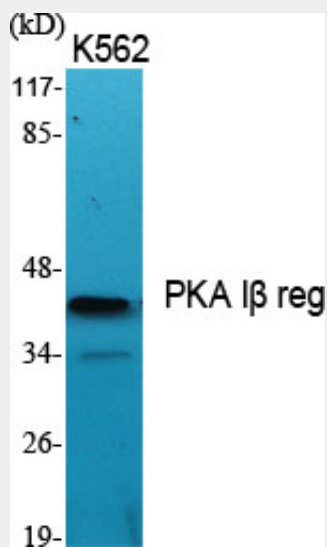
Four types of regulatory chains are found: I-alpha, I-beta, II-alpha, and II-beta. Their expression varies among tissues and is in some cases constitutive and in others inducible

PKA I β reg Polyclonal Antibody - Protocols

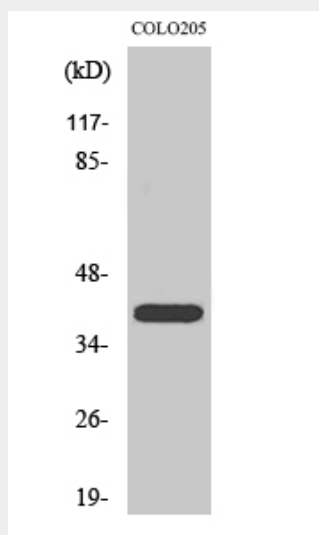
Provided below are standard protocols that you may find useful for product applications.

- [Western Blot](#)
- [Blocking Peptides](#)
- [Dot Blot](#)
- [Immunohistochemistry](#)
- [Immunofluorescence](#)
- [Immunoprecipitation](#)
- [Flow Cytometry](#)
- [Cell Culture](#)

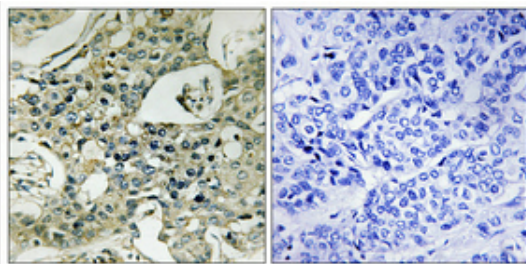
PKA I β reg Polyclonal Antibody - Images



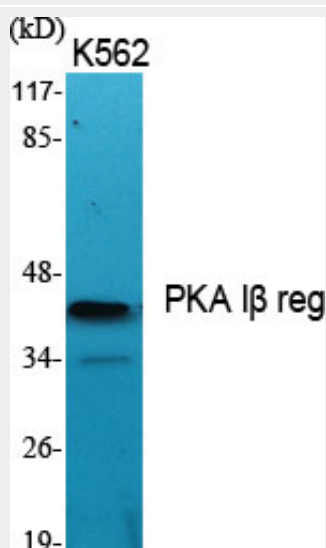
Western Blot analysis of various cells using PKA I β reg Polyclonal Antibody



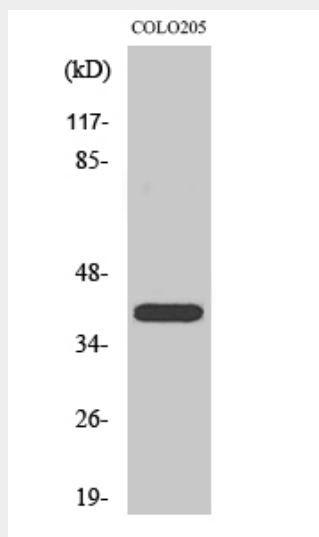
Western Blot analysis of COLO205 cells using PKA I β reg Polyclonal Antibody



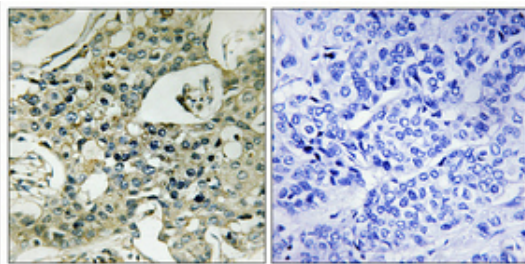
Immunohistochemical analysis of paraffin-embedded Human breast cancer. Antibody was diluted at 1:100(4°,overnight). High-pressure and temperature Tris-EDTA,pH8.0 was used for antigen retrieval. Negative contrl (right) obtained from antibody was pre-absorbed by immunogen peptide.



Western Blot analysis of various cells using PKA Iβ reg Polyclonal Antibody



Western Blot analysis of COLO205 cells using PKA Iβ reg Polyclonal Antibody



Immunohistochemical analysis of paraffin-embedded Human breast cancer. Antibody was diluted at 1:100(4°,overnight). High-pressure and temperature Tris-EDTA,pH8.0 was used for antigen retrieval. Negative contrl (right) obtained from antibody was pre-absorbed by immunogen peptide.

PKA I β reg Polyclonal Antibody - Background

Regulatory subunit of the cAMP-dependent protein kinases involved in cAMP signaling in cells.