

URKL1 Antibody (N-term)
Purified Rabbit Polyclonal Antibody (Pab)
Catalog # AP7193a**Specification**

URKL1 Antibody (N-term) - Product Information

Application	IHC-P, WB,E
Primary Accession	O9NWZ5
Other Accession	O91YL3
Reactivity	Human
Predicted	Mouse
Host	Rabbit
Clonality	Polyclonal
Isotype	Rabbit IgG
Calculated MW	61141
Antigen Region	60-90

URKL1 Antibody (N-term) - Additional Information**Gene ID** 54963**Other Names**

Uridine-cytidine kinase-like 1, UCKL1, URKL1

Target/Specificity

This URKL1 antibody is generated from rabbits immunized with a KLH conjugated synthetic peptide between 60-90 amino acids from the N-terminal region of human URKL1.

Dilution

IHC-P~~1:50~100

WB~~1:1000

E~~Use at an assay dependent concentration.

Format

Purified polyclonal antibody supplied in PBS with 0.09% (W/V) sodium azide. This antibody is prepared by Saturated Ammonium Sulfate (SAS) precipitation followed by dialysis against PBS.

Storage

Maintain refrigerated at 2-8°C for up to 2 weeks. For long term storage store at -20°C in small aliquots to prevent freeze-thaw cycles.

Precautions

URKL1 Antibody (N-term) is for research use only and not for use in diagnostic or therapeutic procedures.

URKL1 Antibody (N-term) - Protein Information**Name** UCKL1

Synonyms URKL1

Function May contribute to UTP accumulation needed for blast transformation and proliferation.

Cellular Location

Cytoplasm. Nucleus. Note=EBNA3 induces isoform 1 translocation to the nucleus, whereas it does change isoform 3 location

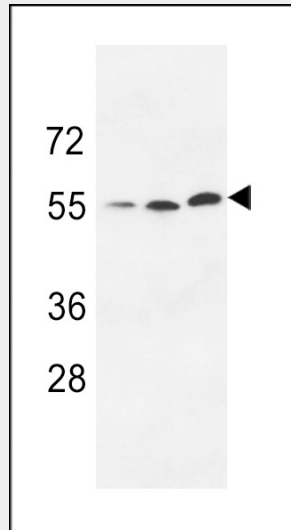
Tissue Location

Ubiquitous..

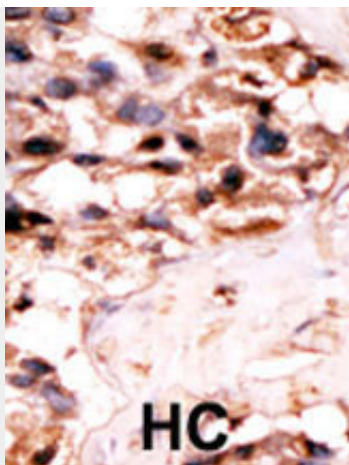
URKL1 Antibody (N-term) - Protocols

Provided below are standard protocols that you may find useful for product applications.

- [Western Blot](#)
- [Blocking Peptides](#)
- [Dot Blot](#)
- [Immunohistochemistry](#)
- [Immunofluorescence](#)
- [Immunoprecipitation](#)
- [Flow Cytometry](#)
- [Cell Culture](#)

URKL1 Antibody (N-term) - Images

Western blot analysis of anti-URKL1 Pab (Cat. #AP7193a) in 293 cell line lysate (35ug/lane). URKL1 (arrow) was detected using the purified Pab.



Formalin-fixed and paraffin-embedded human cancer tissue reacted with the primary antibody, which was peroxidase-conjugated to the secondary antibody, followed by DAB staining. This data demonstrates the use of this antibody for immunohistochemistry; clinical relevance has not been evaluated. BC = breast carcinoma; HC = hepatocarcinoma.

URKL1 Antibody (N-term) - Background

Uridine kinase is a key enzyme in the pyrimidine salvage pathway of all mammalian cells. URKL1 (uridine kinase-like 1) is highly similar in structure and sequence to uridine kinase.

URKL1 Antibody (N-term) - References

Kashuba, E., et al., (er) BMC Cell Biol. 3 (1), 23 (2002) (): ().