

Plakophilin 4 Polyclonal Antibody
Catalog # AP71968**Specification**

Plakophilin 4 Polyclonal Antibody - Product Information

Application	WB, IHC-P
Primary Accession	Q99569
Reactivity	Human, Mouse
Host	Rabbit
Clonality	Polyclonal

Plakophilin 4 Polyclonal Antibody - Additional Information**Gene ID** 8502**Other Names**

PKP4; Plakophilin-4; p0071

Dilution

WB~~Western Blot: 1/500 - 1/2000. Immunohistochemistry: 1/100 - 1/300. ELISA: 1/5000. Not yet tested in other applications.

IHC-P~~N/A

Format

Liquid in PBS containing 50% glycerol, 0.5% BSA and 0.09% (W/V) sodium azide.

Storage Conditions

-20°C

Plakophilin 4 Polyclonal Antibody - Protein Information**Name** PKP4**Function**

Plays a role as a regulator of Rho activity during cytokinesis. May play a role in junctional plaques.

Cellular Location

Cell junction, desmosome. Cytoplasm, cytoskeleton, spindle. Midbody Cell membrane; Peripheral membrane protein. Note=Associated with the pericentrosomal region in interphase and with spindle poles during mitosis. In anaphase, during chromosome segregation, is recruited to the central microtubule bundle, focussed at the spindle midzone and ultimately localizes to the midbody at cytokinesis. Constituent of the midbody cytoskeletal matrix. Colocalized with desmoplakin at desmosomal junctional plaques in cultured epithelial cells

Tissue Location

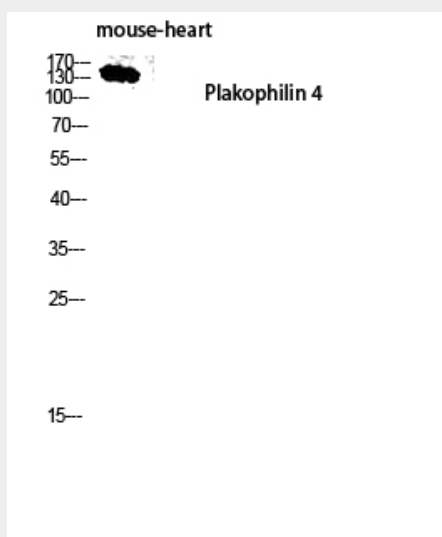
Expressed in salivary glands (at protein level) (PubMed:30479852). Expressed in arrector pili muscle (at protein level) (PubMed:29034528).

Plakophilin 4 Polyclonal Antibody - Protocols

Provided below are standard protocols that you may find useful for product applications.

- [Western Blot](#)
- [Blocking Peptides](#)
- [Dot Blot](#)
- [Immunohistochemistry](#)
- [Immunofluorescence](#)
- [Immunoprecipitation](#)
- [Flow Cytometry](#)
- [Cell Culture](#)

Plakophilin 4 Polyclonal Antibody - Images



Plakophilin 4 Polyclonal Antibody - Background

Plays a role as a regulator of Rho activity during cytokinesis. May play a role in junctional plaques.