

RIOK1 Antibody (N-term)
Purified Rabbit Polyclonal Antibody (Pab)
Catalog # AP7200a**Specification**

RIOK1 Antibody (N-term) - Product Information

Application	WB, IHC-P,E
Primary Accession	Q9BRS2
Reactivity	Human
Host	Rabbit
Clonality	Polyclonal
Isotype	Rabbit IgG
Calculated MW	65583
Antigen Region	126-156

RIOK1 Antibody (N-term) - Additional Information**Gene ID** 83732**Other Names**

Serine/threonine-protein kinase RIO1, RIO kinase 1, RIOK1

Target/Specificity

This RIOK1 antibody is generated from rabbits immunized with a KLH conjugated synthetic peptide between 126-156 amino acids from the N-terminal region of human RIOK1.

Dilution

WB~~1:1000

IHC-P~~1:50~100

E~~Use at an assay dependent concentration.

Format

Purified polyclonal antibody supplied in PBS with 0.09% (W/V) sodium azide. This antibody is prepared by Saturated Ammonium Sulfate (SAS) precipitation followed by dialysis against PBS.

Storage

Maintain refrigerated at 2-8°C for up to 2 weeks. For long term storage store at -20°C in small aliquots to prevent freeze-thaw cycles.

Precautions

RIOK1 Antibody (N-term) is for research use only and not for use in diagnostic or therapeutic procedures.

RIOK1 Antibody (N-term) - Protein Information**Name** RIOK1 ([HGNC:18656](#))**Synonyms** RIO1

Function Involved in the final steps of cytoplasmic maturation of the 40S ribosomal subunit. Involved in processing of 18S-E pre-rRNA to the mature 18S rRNA. Required for the recycling of NOB1 and PNO1 from the late 40S precursor (PubMed:[22072790](#)). The association with the very late 40S subunit intermediate may involve a translation-like checkpoint point cycle preceding the binding to the 60S ribosomal subunit (By similarity). Despite the protein kinase domain is proposed to act predominantly as an ATPase (By similarity). The catalytic activity regulates its dynamic association with the 40S subunit (By similarity). In addition to its role in ribosomal biogenesis acts as an adapter protein by recruiting NCL/nucleolin the to PRMT5 complex for its symmetrical methylation (PubMed:[21081503](#)).

Cellular Location

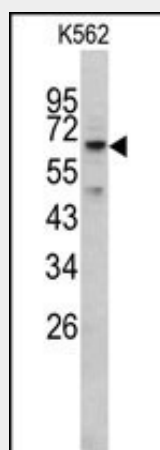
Cytoplasm, cytosol.

RIOK1 Antibody (N-term) - Protocols

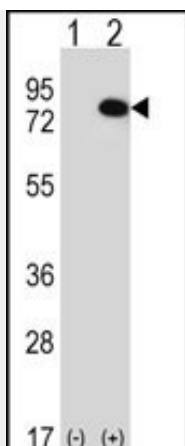
Provided below are standard protocols that you may find useful for product applications.

- [Western Blot](#)
- [Blocking Peptides](#)
- [Dot Blot](#)
- [Immunohistochemistry](#)
- [Immunofluorescence](#)
- [Immunoprecipitation](#)
- [Flow Cytometry](#)
- [Cell Culture](#)

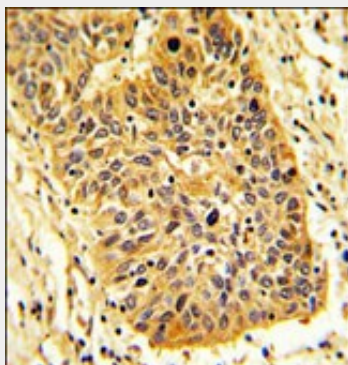
RIOK1 Antibody (N-term) - Images



Western blot analysis of RIOK1 antibody (N-term) (Cat. #AP7200a) in K562 cell line lysates (35ug/lane). RIOK1 (arrow) was detected using the purified Pab.



Western blot analysis of RIOK1 (arrow) using rabbit polyclonal RIOK1 Antibody (N-term) (Cat. #AP7200a). 293 cell lysates (2 ug/lane) either nontransfected (Lane 1) or transiently transfected (Lane 2) with the RIOK1 gene.



Formalin-fixed and paraffin-embedded human lung carcinoma reacted with RIOK1 Antibody (N-term), which was peroxidase-conjugated to the secondary antibody, followed by DAB staining. This data demonstrates the use of this antibody for immunohistochemistry; clinical relevance has not been evaluated.

RIOK1 Antibody (N-term) - References

Ota, T., et al., Nat. Genet. 36(1):40-45 (2004).