

**PP2Cε Polyclonal Antibody**  
Catalog # AP72014**Specification**

---

**PP2Cε Polyclonal Antibody - Product Information**

Application	WB
Primary Accession	<a href="#">Q5SGD2</a>
Reactivity	Human, Mouse, Rat
Host	Rabbit
Clonality	Polyclonal

**PP2Cε Polyclonal Antibody - Additional Information****Gene ID** 151742**Other Names**

PPM1L; PP2CE; Protein phosphatase 1L; Protein phosphatase 1-like; Protein phosphatase 2C isoform epsilon; PP2C-epsilon

**Dilution**

WB~~Western Blot: 1/500 - 1/2000. ELISA: 1/10000. Not yet tested in other applications.

**Format**

Liquid in PBS containing 50% glycerol, 0.5% BSA and 0.09% (W/V) sodium azide.

**Storage Conditions**

-20°C

**PP2Cε Polyclonal Antibody - Protein Information****Name** PPM1L**Synonyms** PP2CE**Function**

Acts as a suppressor of the SAPK signaling pathways by associating with and dephosphorylating MAP3K7/TAK1 and MAP3K5, and by attenuating the association between MAP3K7/TAK1 and MAP2K4 or MAP2K6.

**Cellular Location**

Membrane; Single-pass type I membrane protein

**Tissue Location**

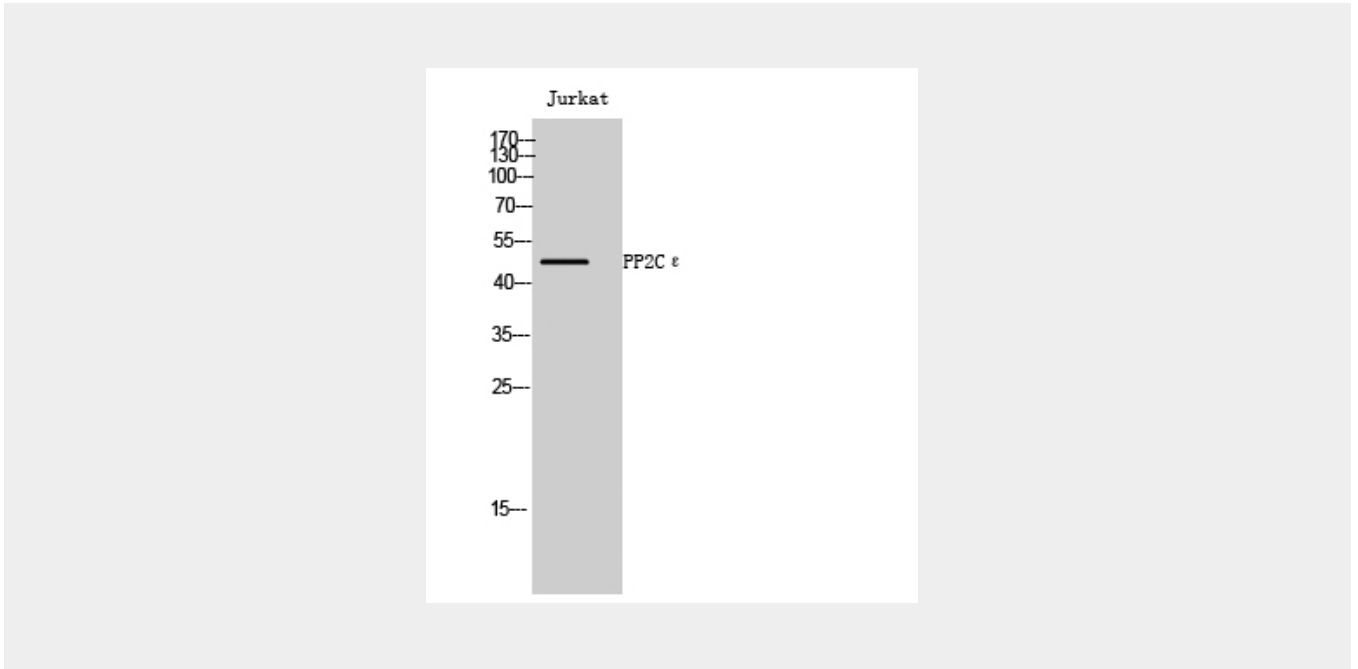
Ubiquitous. Highly expressed in heart, placenta, lung, liver, kidney and pancreas.

**PP2Cε Polyclonal Antibody - Protocols**

Provided below are standard protocols that you may find useful for product applications.

- [Western Blot](#)
- [Blocking Peptides](#)
- [Dot Blot](#)
- [Immunohistochemistry](#)
- [Immunofluorescence](#)
- [Immunoprecipitation](#)
- [Flow Cytometry](#)
- [Cell Culture](#)

#### PP2C $\epsilon$ Polyclonal Antibody - Images



#### PP2C $\epsilon$ Polyclonal Antibody - Background

Acts as a suppressor of the SAPK signaling pathways by associating with and dephosphorylating MAP3K7/TAK1 and MAP3K5, and by attenuating the association between MAP3K7/TAK1 and MAP2K4 or MAP2K6.