

PP32R1 Polyclonal Antibody
Catalog # AP72016**Specification**

PP32R1 Polyclonal Antibody - Product Information

Application	WB
Primary Accession	O43423
Reactivity	Human
Host	Rabbit
Clonality	Polyclonal

PP32R1 Polyclonal Antibody - Additional Information**Other Names**

ANP32C; PP32R1; Acidic leucine-rich nuclear phosphoprotein 32 family member C; Phosphoprotein 32-related protein 1; Tumorigenic protein pp32r1

Dilution

WB~~Western Blot: 1/500 - 1/2000. ELISA: 1/10000. Not yet tested in other applications.

Format

Liquid in PBS containing 50% glycerol, 0.5% BSA and 0.09% (W/V) sodium azide.

Storage Conditions

-20°C

PP32R1 Polyclonal Antibody - Protein Information

Name ANP32CP ([HGNC:16675](#))

Synonyms PP32R1

Tissue Location

Expressed in activated stem cells, such as mobilized CD34+ cells and cord blood CD34+ cells, but not in resting bone marrow CD34+ cells. Expressed in a variety of neoplastic cell lines, mainly in prostatic adenocarcinoma cell lines. Not expressed in normal prostatic tissue.

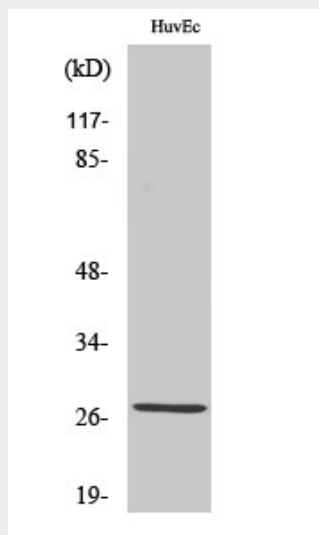
PP32R1 Polyclonal Antibody - Protocols

Provided below are standard protocols that you may find useful for product applications.

- [Western Blot](#)
- [Blocking Peptides](#)
- [Dot Blot](#)
- [Immunohistochemistry](#)
- [Immunofluorescence](#)

- [Immunoprecipitation](#)
- [Flow Cytometry](#)
- [Cell Culture](#)

PP32R1 Polyclonal Antibody - Images



Western Blot analysis of various cells using PP32R1 Polyclonal Antibody diluted at 1:1000