

PR Polyclonal Antibody
Catalog # AP72026**Specification**

PR Polyclonal Antibody - Product Information

Application	WB, IHC-P, IF
Primary Accession	P06401
Reactivity	Human
Host	Rabbit
Clonality	Polyclonal

PR Polyclonal Antibody - Additional Information**Gene ID** 5241**Other Names**

PGR; NR3C3; Progesterone receptor; PR; Nuclear receptor subfamily 3 group C member 3

Dilution

WB~~Western Blot: 1/500 - 1/2000. Immunohistochemistry: 1/100 - 1/300. Immunofluorescence: 1/200 - 1/1000. ELISA: 1/5000. Not yet tested in other applications.

IHC-P~~N/A

IF~~1:50~200

Format

Liquid in PBS containing 50% glycerol, 0.5% BSA and 0.09% (W/V) sodium azide.

Storage Conditions

-20°C

PR Polyclonal Antibody - Protein Information**Name** PGR**Synonyms** NR3C3**Function**

The steroid hormones and their receptors are involved in the regulation of eukaryotic gene expression and affect cellular proliferation and differentiation in target tissues. Depending on the isoform, progesterone receptor functions as a transcriptional activator or repressor.

Cellular Location

Nucleus. Cytoplasm. Note=Nucleoplasmic shuttling is both hormone- and cell cycle-dependent. On hormone stimulation, retained in the cytoplasm in the G(1) and G(2)/M phases [Isoform 4]: Mitochondrion outer membrane

Tissue Location

In reproductive tissues the expression of isoform A and isoform B varies as a consequence of

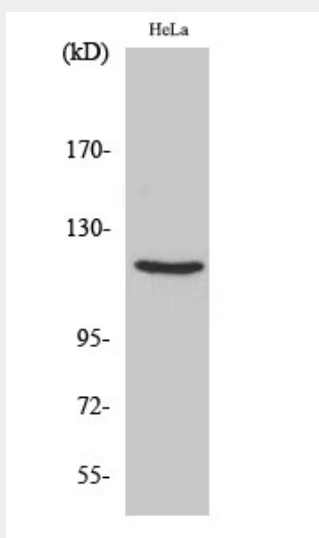
developmental and hormonal status. Isoform A and isoform B are expressed in comparable levels in uterine glandular epithelium during the proliferative phase of the menstrual cycle. Expression of isoform B but not of isoform A persists in the glands during mid-secretory phase. In the stroma, isoform A is the predominant form throughout the cycle. Heterogeneous isoform expression between the glands of the endometrium basalis and functionalis is implying region-specific responses to hormonal stimuli

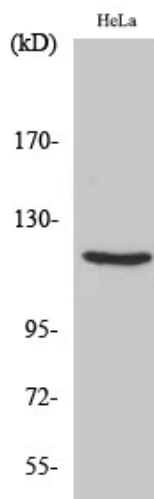
PR Polyclonal Antibody - Protocols

Provided below are standard protocols that you may find useful for product applications.

- [Western Blot](#)
- [Blocking Peptides](#)
- [Dot Blot](#)
- [Immunohistochemistry](#)
- [Immunofluorescence](#)
- [Immunoprecipitation](#)
- [Flow Cytometry](#)
- [Cell Culture](#)

PR Polyclonal Antibody - Images





PR Polyclonal Antibody - Background

The steroid hormones and their receptors are involved in the regulation of eukaryotic gene expression and affect cellular proliferation and differentiation in target tissues. Depending on the isoform, progesterone receptor functions as transcriptional activator or repressor.