

**PRX1 Polyclonal Antibody**  
**Catalog # AP72057****Specification**

---

**PRX1 Polyclonal Antibody - Product Information**

Application	WB
Primary Accession	<a href="#">P54821</a>
Reactivity	Human, Mouse, Rat
Host	Rabbit
Clonality	Polyclonal

**PRX1 Polyclonal Antibody - Additional Information****Gene ID** 5396**Other Names**

PRRX1; PMX1; Paired mesoderm homeobox protein 1; Homeobox protein PHOX1; Paired-related homeobox protein 1; PRX-1

**Dilution**

WB~~Western Blot: 1/500 - 1/2000. ELISA: 1/10000. Not yet tested in other applications.

**Format**

Liquid in PBS containing 50% glycerol, 0.5% BSA and 0.09% (W/V) sodium azide.

**Storage Conditions**

-20°C

**PRX1 Polyclonal Antibody - Protein Information****Name** PRRX1**Synonyms** PMX1**Function**

Master transcription factor of stromal fibroblasts for myofibroblastic lineage progression. Orchestrates the functional drift of fibroblasts into myofibroblastic phenotype via TGF-beta signaling by remodeling a super-enhancer landscape. Through this function, plays an essential role in wound healing process (PubMed:<a href="http://www.uniprot.org/citations/35589735" target="\_blank">35589735</a>). Acts as a transcriptional regulator of muscle creatine kinase (MCK) and so has a role in the establishment of diverse mesodermal muscle types. The protein binds to an A/T-rich element in the muscle creatine enhancer (By similarity). May play a role in homeostasis and regeneration of bone, white adipose tissue and derm (By similarity).

**Cellular Location**

Nucleus {ECO:0000250|UniProtKB:P63013}.

**Tissue Location**

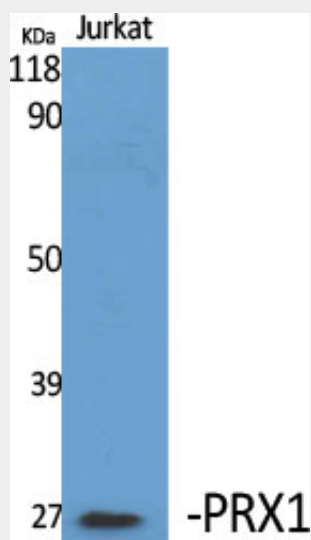
[Isoform 1]: Widely expressed in embryonic and adult tissues, with highest levels in skeletal muscle. Isoform 1 is either expressed at similar or higher levels compared to isoform 2 in all embryonic tissues but skeletal muscle and heart. In adult tissues, expressed at lower levels compared to isoform 2

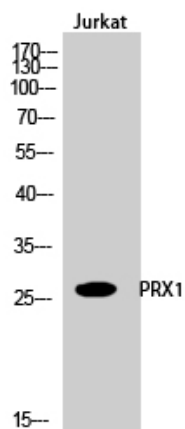
### PRX1 Polyclonal Antibody - Protocols

Provided below are standard protocols that you may find useful for product applications.

- [Western Blot](#)
- [Blocking Peptides](#)
- [Dot Blot](#)
- [Immunohistochemistry](#)
- [Immunofluorescence](#)
- [Immunoprecipitation](#)
- [Flow Cytometry](#)
- [Cell Culture](#)

### PRX1 Polyclonal Antibody - Images





### PRX1 Polyclonal Antibody - Background

Acts as a transcriptional regulator of muscle creatine kinase (MCK) and so has a role in the establishment of diverse mesodermal muscle types. The protein binds to an A/T-rich element in the muscle creatine enhancer (By similarity).