

PSD-93 Polyclonal Antibody
Catalog # AP72061**Specification**

PSD-93 Polyclonal Antibody - Product Information

Application	WB, IHC-P
Primary Accession	Q15700
Reactivity	Human
Host	Rabbit
Clonality	Polyclonal

PSD-93 Polyclonal Antibody - Additional Information**Gene ID** 1740**Other Names**

DLG2; Disks large homolog 2; Channel-associated protein of synapse-110; Chapsyn-110; Postsynaptic density protein PSD-93

Dilution

WB~~Western Blot: 1/500 - 1/2000. Immunohistochemistry: 1/100 - 1/300. ELISA: 1/40000. Not yet tested in other applications.

IHC-P~~N/A

Format

Liquid in PBS containing 50% glycerol, 0.5% BSA and 0.09% (W/V) sodium azide.

Storage Conditions

-20°C

PSD-93 Polyclonal Antibody - Protein Information**Name** DLG2**Function**

Required for perception of chronic pain through NMDA receptor signaling. Regulates surface expression of NMDA receptors in dorsal horn neurons of the spinal cord. Interacts with the cytoplasmic tail of NMDA receptor subunits as well as inward rectifying potassium channels. Involved in regulation of synaptic stability at cholinergic synapses. Part of the postsynaptic protein scaffold of excitatory synapses (By similarity).

Cellular Location

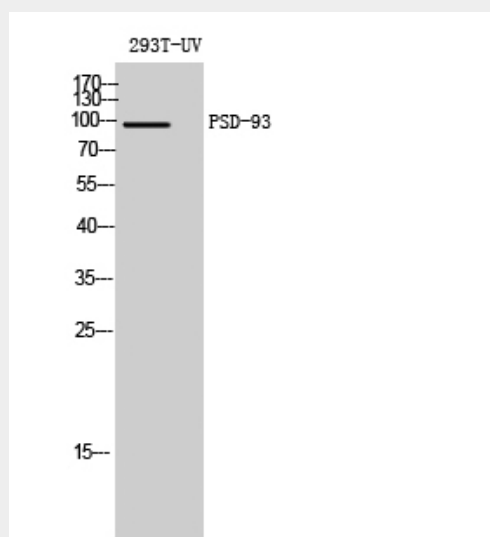
Cell membrane {ECO:0000250|UniProtKB:Q63622}; Lipid-anchor {ECO:0000250|UniProtKB:Q63622}. Postsynaptic density {ECO:0000250|UniProtKB:Q63622}. Synapse. Membrane {ECO:0000250|UniProtKB:Q63622}. Cell projection, axon {ECO:0000250|UniProtKB:Q63622}. Perikaryon {ECO:0000250|UniProtKB:Q63622}. Note=Concentrated in soma and postsynaptic density of a subset of neurons {ECO:0000250|UniProtKB:Q63622}

PSD-93 Polyclonal Antibody - Protocols

Provided below are standard protocols that you may find useful for product applications.

- [Western Blot](#)
- [Blocking Peptides](#)
- [Dot Blot](#)
- [Immunohistochemistry](#)
- [Immunofluorescence](#)
- [Immunoprecipitation](#)
- [Flow Cytometry](#)
- [Cell Culture](#)

PSD-93 Polyclonal Antibody - Images



PSD-93 Polyclonal Antibody - Background

Required for perception of chronic pain through NMDA receptor signaling. Regulates surface expression of NMDA receptors in dorsal horn neurons of the spinal cord. Interacts with the cytoplasmic tail of NMDA receptor subunits as well as inward rectifying potassium channels. Involved in regulation of synaptic stability at cholinergic synapses. Part of the postsynaptic protein scaffold of excitatory synapses (By similarity).