

PSMD11 Polyclonal Antibody
Catalog # AP72069**Specification**

PSMD11 Polyclonal Antibody - Product Information

Application	WB, IHC-P
Primary Accession	O00231
Reactivity	Human, Mouse
Host	Rabbit
Clonality	Polyclonal

PSMD11 Polyclonal Antibody - Additional Information**Gene ID** 5717**Other Names**

PSMD11; 26S proteasome non-ATPase regulatory subunit 11; 26S proteasome regulatory subunit RPN6; 26S proteasome regulatory subunit S9; 26S proteasome regulatory subunit p44.5

Dilution

WB~~Western Blot: 1/500 - 1/2000. Immunohistochemistry: 1/100 - 1/300. ELISA: 1/10000. Not yet tested in other applications.

IHC-P~~N/A

Format

Liquid in PBS containing 50% glycerol, 0.5% BSA and 0.09% (W/V) sodium azide.

Storage Conditions

-20°C

PSMD11 Polyclonal Antibody - Protein Information**Name** PSMD11**Function**

Component of the 26S proteasome, a multiprotein complex involved in the ATP-dependent degradation of ubiquitinated proteins. This complex plays a key role in the maintenance of protein homeostasis by removing misfolded or damaged proteins, which could impair cellular functions, and by removing proteins whose functions are no longer required. Therefore, the proteasome participates in numerous cellular processes, including cell cycle progression, apoptosis, or DNA damage repair. In the complex, PSMD11 is required for proteasome assembly. Plays a key role in increased proteasome activity in embryonic stem cells (ESCs): its high expression in ESCs promotes enhanced assembly of the 26S proteasome, followed by higher proteasome activity.

Cellular Location

Nucleus. Cytoplasm, cytosol

Tissue Location

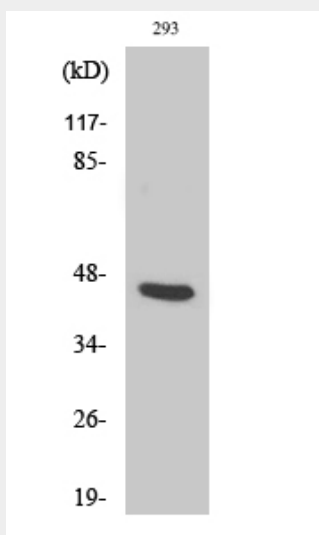
Highly expressed in embryonic stem cells (ESCs). Expression decreases as ESCs differentiate

PSMD11 Polyclonal Antibody - Protocols

Provided below are standard protocols that you may find useful for product applications.

- [Western Blot](#)
- [Blocking Peptides](#)
- [Dot Blot](#)
- [Immunohistochemistry](#)
- [Immunofluorescence](#)
- [Immunoprecipitation](#)
- [Flow Cytometry](#)
- [Cell Culture](#)

PSMD11 Polyclonal Antibody - Images



PSMD11 Polyclonal Antibody - Background

Component of the 26S proteasome, a multiprotein complex involved in the ATP-dependent degradation of ubiquitinated proteins. This complex plays a key role in the maintenance of protein homeostasis by removing misfolded or damaged proteins, which could impair cellular functions, and by removing proteins whose functions are no longer required. Therefore, the proteasome participates in numerous cellular processes, including cell cycle progression, apoptosis, or DNA damage repair. In the complex, PSMD11 is required for proteasome assembly. Plays a key role in increased proteasome activity in embryonic stem cells (ESCs): its high expression in ESCs promotes enhanced assembly of the 26S proteasome, followed by higher proteasome activity.