

**PTH/PTHrP-R Polyclonal Antibody**  
Catalog # AP72081**Specification**

---

**PTH/PTHrP-R Polyclonal Antibody - Product Information**

Application	WB
Primary Accession	<a href="#">Q03431</a>
Reactivity	Human, Mouse, Rat
Host	Rabbit
Clonality	Polyclonal

**PTH/PTHrP-R Polyclonal Antibody - Additional Information****Gene ID** 5745**Other Names**

PTH1R; PTHR; PTHR1; Parathyroid hormone/parathyroid hormone-related peptide receptor; PTH/PTHrP type I receptor; PTH/PTHr receptor; Parathyroid hormone 1 receptor; PTH1 receptor

**Dilution**

WB~~Western Blot: 1/500 - 1/2000. Immunohistochemistry: 1/100 - 1/300. Immunofluorescence: 1/200 - 1/1000. ELISA: 1/10000. Not yet tested in other applications.

**Format**

Liquid in PBS containing 50% glycerol, 0.5% BSA and 0.09% (W/V) sodium azide.

**Storage Conditions**

-20°C

**PTH/PTHrP-R Polyclonal Antibody - Protein Information****Name** PTH1R**Synonyms** PTHR, PTHR1**Function**

Receptor for parathyroid hormone and for parathyroid hormone- related peptide. The activity of this receptor is mediated by G proteins which activate adenylyl cyclase and also a phosphatidylinositol-calcium second messenger system.

**Cellular Location**

Cell membrane; Multi-pass membrane protein

**Tissue Location**

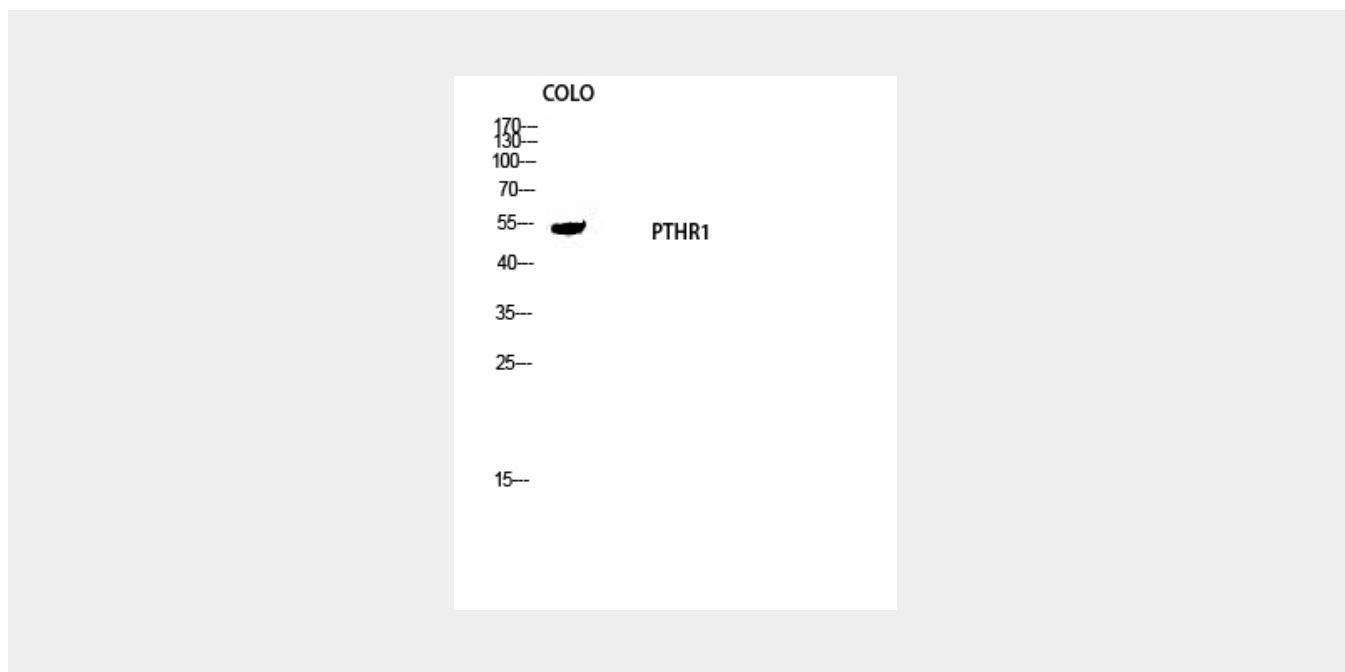
Expressed in most tissues. Most abundant in kidney, bone and liver.

## PTH/PTHrP-R Polyclonal Antibody - Protocols

Provided below are standard protocols that you may find useful for product applications.

- [Western Blot](#)
- [Blocking Peptides](#)
- [Dot Blot](#)
- [Immunohistochemistry](#)
- [Immunofluorescence](#)
- [Immunoprecipitation](#)
- [Flow Cytometry](#)
- [Cell Culture](#)

## PTH/PTHrP-R Polyclonal Antibody - Images



## PTH/PTHrP-R Polyclonal Antibody - Background

Receptor for parathyroid hormone and for parathyroid hormone-related peptide. The activity of this receptor is mediated by G proteins which activate adenylyl cyclase and also a phosphatidylinositol-calcium second messenger system.