

Ptx3 Polyclonal Antibody
Catalog # AP72088**Specification**

Ptx3 Polyclonal Antibody - Product Information

| | |
|-------------------|------------------------|
| Application | WB, IHC-P, IF |
| Primary Accession | P26022 |
| Reactivity | Human, Mouse |
| Host | Rabbit |
| Clonality | Polyclonal |

Ptx3 Polyclonal Antibody - Additional Information**Gene ID** 5806**Other Names**

PTX3; TNFAIP5; TSG14; Pentraxin-related protein PTX3; Pentaxin-related protein PTX3; Tumor necrosis factor alpha-induced protein 5; TNF alpha-induced protein 5; Tumor necrosis factor-inducible gene 14 protein; TSG-14

Dilution

WB~~Western Blot: 1/500 - 1/2000. Immunohistochemistry: 1/100 - 1/300. Immunofluorescence: 1/200 - 1/1000. ELISA: 1/10000. Not yet tested in other applications.
IHC-P~~N/A
IF~~1:50~200

Format

Liquid in PBS containing 50% glycerol, 0.5% BSA and 0.09% (W/V) sodium azide.

Storage Conditions

-20°C

Ptx3 Polyclonal Antibody - Protein Information**Name** PTX3 ([HGNC:9692](#))**Synonyms** TNFAIP5, TSG14**Function**

Plays a role in the regulation of innate resistance to pathogens, inflammatory reactions, possibly clearance of self- components and female fertility.

Cellular Location

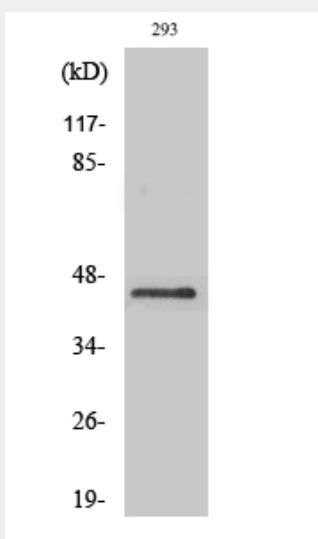
Secreted.

Ptx3 Polyclonal Antibody - Protocols

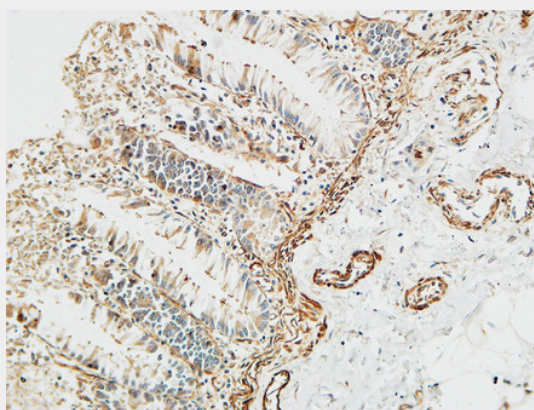
Provided below are standard protocols that you may find useful for product applications.

- [Western Blot](#)
- [Blocking Peptides](#)
- [Dot Blot](#)
- [Immunohistochemistry](#)
- [Immunofluorescence](#)
- [Immunoprecipitation](#)
- [Flow Cytometry](#)
- [Cell Culture](#)

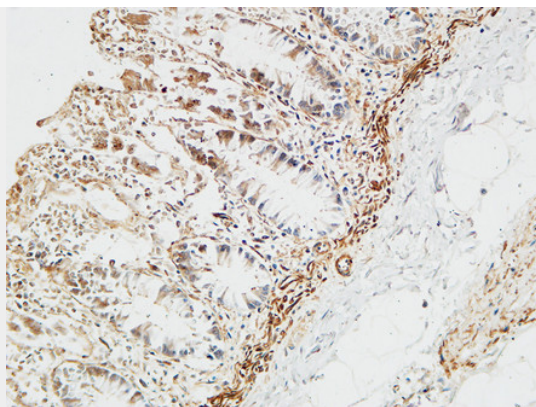
Ptx3 Polyclonal Antibody - Images



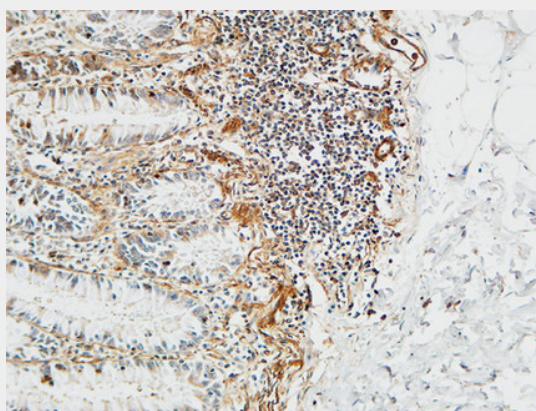
Western Blot analysis of various cells using Ptx3 Polyclonal Antibody diluted at 1:1000



Immunohistochemical analysis of paraffin-embedded Human colon. 1, Antibody was diluted at 1:100(4°,overnight). 2, High-pressure and temperature EDTA, pH8.0 was used for antigen retrieval. 3,Secondary antibody was diluted at 1:200(room temperature, 30min).



Immunohistochemical analysis of paraffin-embedded Human colon. 1, Antibody was diluted at 1:100(4°,overnight). 2, High-pressure and temperature EDTA, pH8.0 was used for antigen retrieval. 3,Secondary antibody was diluted at 1:200(room temperature, 30min).



Immunohistochemical analysis of paraffin-embedded Human colon. 1, Antibody was diluted at 1:100(4°,overnight). 2, High-pressure and temperature EDTA, pH8.0 was used for antigen retrieval. 3,Secondary antibody was diluted at 1:200(room temperature, 30min).

Ptx3 Polyclonal Antibody - Background

Plays a role in the regulation of innate resistance to pathogens, inflammatory reactions, possibly clearance of self- components and female fertility.