

Rab 18 Polyclonal Antibody
Catalog # AP72103**Specification****Rab 18 Polyclonal Antibody - Product Information**

Application	WB
Primary Accession	Q9NP72
Reactivity	Human, Mouse, Rat
Host	Rabbit
Clonality	Polyclonal

Rab 18 Polyclonal Antibody - Additional Information

Gene ID 22931

Other Names

RAB18; Ras-related protein Rab-18

Dilution

WB~~Western Blot: 1/500 - 1/2000. ELISA: 1/10000. Not yet tested in other applications.

Format

Liquid in PBS containing 50% glycerol, 0.5% BSA and 0.09% (W/V) sodium azide.

Storage Conditions

-20°C

Rab 18 Polyclonal Antibody - Protein InformationName RAB18 ([HGNC:14244](#))**Function**

The small GTPases Rab are key regulators of intracellular membrane trafficking, from the formation of transport vesicles to their fusion with membranes (PubMed: [24891604](http://www.uniprot.org/citations/24891604), PubMed: [30970241](http://www.uniprot.org/citations/30970241)). Rabs cycle between an inactive GDP-bound form and an active GTP-bound form that is able to recruit to membranes different sets of downstream effectors directly responsible for vesicle formation, movement, tethering and fusion (PubMed: [24891604](http://www.uniprot.org/citations/24891604), PubMed: [30970241](http://www.uniprot.org/citations/30970241)). RAB18 is required for the localization of ZFYVE1 to lipid droplets and for its function in mediating the formation of endoplasmic reticulum-lipid droplets (ER-LD) contacts (PubMed: [30970241](http://www.uniprot.org/citations/30970241)). Also required for maintaining endoplasmic reticulum structure (PubMed: [24891604](http://www.uniprot.org/citations/24891604)). Plays a role in apical endocytosis/recycling (By similarity). Plays a key role in eye and brain development and neurodegeneration (PubMed: [21473985](http://www.uniprot.org/citations/21473985)).

Cellular Location

Endoplasmic reticulum membrane. Golgi apparatus, cis-Golgi network membrane Lipid droplet. Apical cell membrane {ECO:0000250|UniProtKB:P35293}. Note=Localized to the ER membrane as well as to the cis-Golgi in fibroblasts.

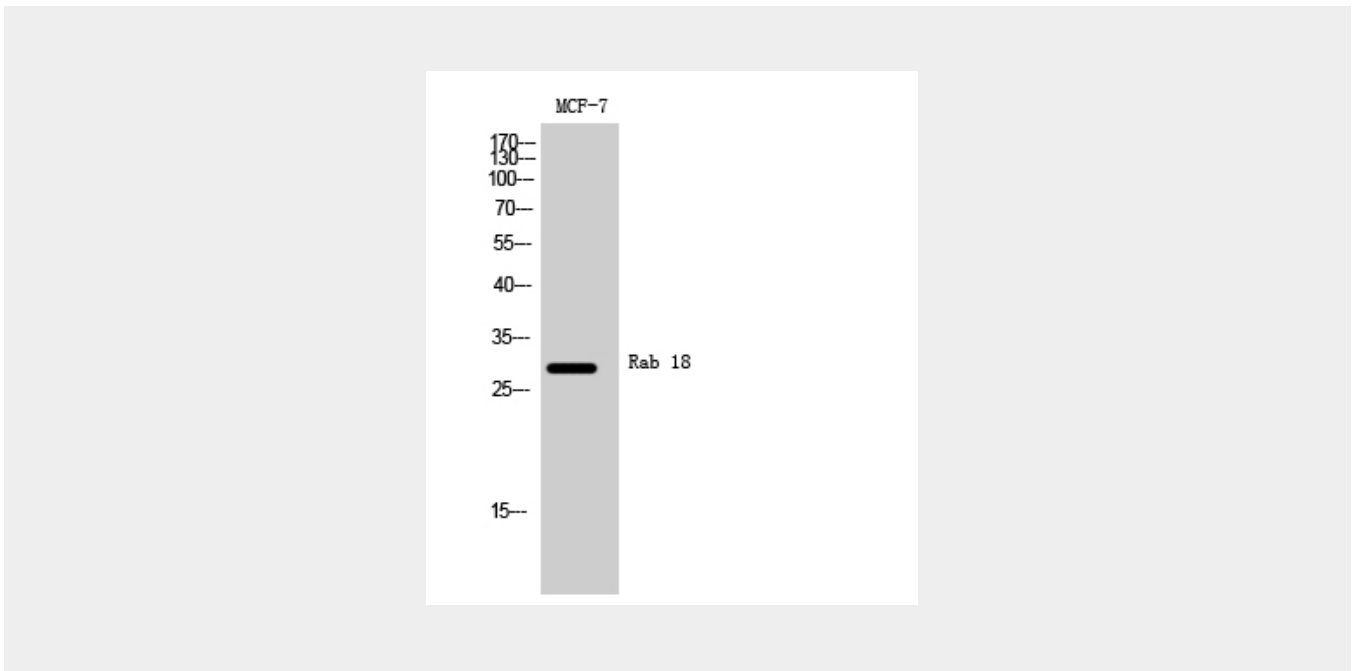
Tissue Location

Ubiquitous.

Rab 18 Polyclonal Antibody - Protocols

Provided below are standard protocols that you may find useful for product applications.

- [Western Blot](#)
- [Blocking Peptides](#)
- [Dot Blot](#)
- [Immunohistochemistry](#)
- [Immunofluorescence](#)
- [Immunoprecipitation](#)
- [Flow Cytometry](#)
- [Cell Culture](#)

Rab 18 Polyclonal Antibody - Images**Rab 18 Polyclonal Antibody - Background**

Plays a role in apical endocytosis/recycling. May be implicated in transport between the plasma membrane and early endosomes. Plays a key role in eye and brain development and neurodegeneration.