

Rab11-FIP2 Polyclonal Antibody
Catalog # AP72126**Specification**

Rab11-FIP2 Polyclonal Antibody - Product Information

Application	WB
Primary Accession	Q7L804
Reactivity	Human, Mouse
Host	Rabbit
Clonality	Polyclonal

Rab11-FIP2 Polyclonal Antibody - Additional Information**Gene ID** 22841**Other Names**

RAB11FIP2; KIAA0941; Rab11 family-interacting protein 2; Rab11-FIP2; NRip11

Dilution

WB~~Western Blot: 1/500 - 1/2000. ELISA: 1/10000. Not yet tested in other applications.

Format

Liquid in PBS containing 50% glycerol, 0.5% BSA and 0.09% (W/V) sodium azide.

Storage Conditions

-20°C

Rab11-FIP2 Polyclonal Antibody - Protein Information**Name** RAB11FIP2**Synonyms** KIAA0941**Function**

A Rab11 effector binding preferentially phosphatidylinositol 3,4,5-trisphosphate (PtdInsP3) and phosphatidic acid (PA) and acting in the regulation of the transport of vesicles from the endosomal recycling compartment (ERC) to the plasma membrane. Involved in insulin granule exocytosis. Also involved in receptor-mediated endocytosis and membrane trafficking of recycling endosomes, probably originating from clathrin-coated vesicles. Required in a complex with MYO5B and RAB11 for the transport of NPC1L1 to the plasma membrane. Also acts as a regulator of cell polarity. Plays an essential role in phagocytosis through a mechanism involving TICAM2, RAC1 and CDC42 Rho GTPases for controlling actin-dynamics.

Cellular Location

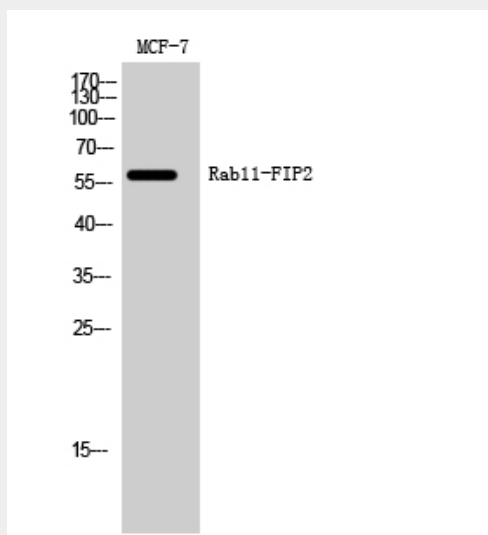
Cell projection, phagocytic cup. Cell membrane; Peripheral membrane protein. Recycling endosome membrane; Peripheral membrane protein Note=Translocates with RAB11A from the vesicles of the endocytic recycling compartment (ERC) to the plasma membrane

Rab11-FIP2 Polyclonal Antibody - Protocols

Provided below are standard protocols that you may find useful for product applications.

- [Western Blot](#)
- [Blocking Peptides](#)
- [Dot Blot](#)
- [Immunohistochemistry](#)
- [Immunofluorescence](#)
- [Immunoprecipitation](#)
- [Flow Cytometry](#)
- [Cell Culture](#)

Rab11-FIP2 Polyclonal Antibody - Images



Rab11-FIP2 Polyclonal Antibody - Background

A Rab11 effector binding preferentially phosphatidylinositol 3,4,5-trisphosphate (PtdInsP3) and phosphatidic acid (PA) and acting in the regulation of the transport of vesicles from the endosomal recycling compartment (ERC) to the plasma membrane. Involved in insulin granule exocytosis. Also involved in receptor-mediated endocytosis and membrane trafficking of recycling endosomes, probably originating from clathrin-coated vesicles. Required in a complex with MYO5B and RAB11 for the transport of NPC1L1 to the plasma membrane. Also acts as a regulator of cell polarity.