

RASSF6 Polyclonal Antibody
Catalog # AP72196**Specification**

RASSF6 Polyclonal Antibody - Product Information

Application	WB
Primary Accession	Q6ZTQ3
Reactivity	Human
Host	Rabbit
Clonality	Polyclonal

RASSF6 Polyclonal Antibody - Additional Information**Gene ID** 166824**Other Names**

RASSF6; Ras association domain-containing protein 6

Dilution

WB~~Western Blot: 1/500 - 1/2000. ELISA: 1/10000. Not yet tested in other applications.

Format

Liquid in PBS containing 50% glycerol, 0.5% BSA and 0.09% (W/V) sodium azide.

Storage Conditions

-20°C

RASSF6 Polyclonal Antibody - Protein Information**Name** RASSF6**Function**

Involved in the induction of apoptosis, through both caspase- dependent and caspase-independent pathways. May act as a Ras effector protein. May suppress the serum-induced basal levels of NF-kappa-B (By similarity).

Tissue Location

Highest expression in thymus, kidney and placenta. Also detected in colon, small intestine and lung. Tends to be down- regulated in 30-60% of tumors derived from breast, colon, kidney liver, rectum, pancreas, stomach and the thyroid gland compared to the normal counterpart.

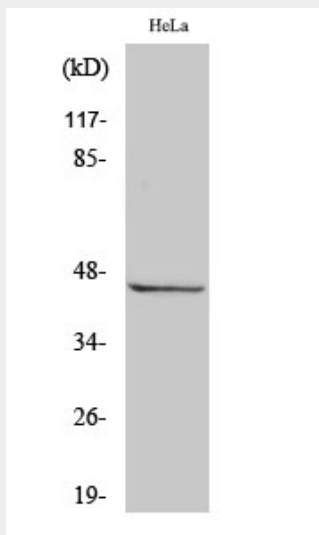
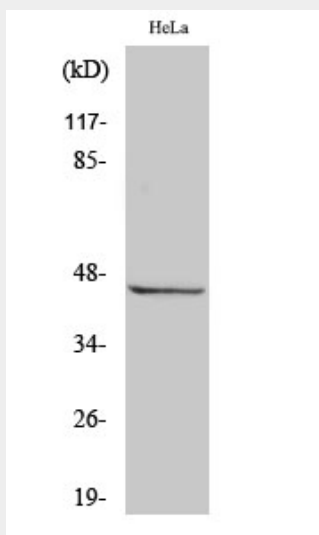
RASSF6 Polyclonal Antibody - Protocols

Provided below are standard protocols that you may find useful for product applications.

- [Western Blot](#)

- [Blocking Peptides](#)
- [Dot Blot](#)
- [Immunohistochemistry](#)
- [Immunofluorescence](#)
- [Immunoprecipitation](#)
- [Flow Cytometry](#)
- [Cell Culture](#)

RASSF6 Polyclonal Antibody - Images



RASSF6 Polyclonal Antibody - Background

Involved in the induction of apoptosis, through both caspase-dependent and caspase-independent pathways. May act as a Ras effector protein. May suppress the serum-induced basal levels of NF-kappa-B (By similarity).