

**Rb Polyclonal Antibody**  
**Catalog # AP72204****Specification**

---

**Rb Polyclonal Antibody - Product Information**

Application	WB, IHC-P, IF
Primary Accession	<a href="#">P06400</a>
Reactivity	Human, Mouse, Rat
Host	Rabbit
Clonality	Polyclonal

**Rb Polyclonal Antibody - Additional Information****Gene ID** 5925**Other Names**

RB1; Retinoblastoma-associated protein; p105-Rb; pRb; Rb; pp110

**Dilution**

WB~~Western Blot: 1/500 - 1/2000. Immunohistochemistry: 1/100 - 1/300. Immunofluorescence: 1/200 - 1/1000. ELISA: 1/5000. Not yet tested in other applications.  
IHC-P~~N/A  
IF~~1:50~200

**Format**

Liquid in PBS containing 50% glycerol, 0.5% BSA and 0.09% (W/V) sodium azide.

**Storage Conditions**

-20°C

**Rb Polyclonal Antibody - Protein Information****Name** RB1**Function**

Tumor suppressor that is a key regulator of the G1/S transition of the cell cycle (PubMed:<a href="http://www.uniprot.org/citations/10499802" target="\_blank">10499802</a>). The hypophosphorylated form binds transcription regulators of the E2F family, preventing transcription of E2F-responsive genes (PubMed:<a href="http://www.uniprot.org/citations/10499802" target="\_blank">10499802</a>). Both physically blocks E2Fs transactivating domain and recruits chromatin- modifying enzymes that actively repress transcription (PubMed:<a href="http://www.uniprot.org/citations/10499802" target="\_blank">10499802</a>). Cyclin and CDK-dependent phosphorylation of RB1 induces its dissociation from E2Fs, thereby activating transcription of E2F responsive genes and triggering entry into S phase (PubMed:<a href="http://www.uniprot.org/citations/10499802" target="\_blank">10499802</a>). RB1 also promotes the G0-G1 transition upon phosphorylation and activation by CDK3/cyclin-C (PubMed:<a href="http://www.uniprot.org/citations/15084261" target="\_blank">15084261</a>). Directly involved in heterochromatin formation by maintaining overall chromatin structure and, in

particular, that of constitutive heterochromatin by stabilizing histone methylation. Recruits and targets histone methyltransferases SUV39H1, KMT5B and KMT5C, leading to epigenetic transcriptional repression. Controls histone H4 'Lys-20' trimethylation. Inhibits the intrinsic kinase activity of TAF1. Mediates transcriptional repression by SMARCA4/BRG1 by recruiting a histone deacetylase (HDAC) complex to the c-FOS promoter. In resting neurons, transcription of the c-FOS promoter is inhibited by BRG1- dependent recruitment of a phospho-RB1-HDAC1 repressor complex. Upon calcium influx, RB1 is dephosphorylated by calcineurin, which leads to release of the repressor complex (By similarity).

#### Cellular Location

Nucleus. Cytoplasm {ECO:0000250|UniProtKB:P13405}. Note=During keratinocyte differentiation, acetylation by KAT2B/PCAF is required for nuclear localization (PubMed:20940255). Localizes to the cytoplasm when hyperphosphorylated (By similarity). {ECO:0000250|UniProtKB:P13405, ECO:0000269|PubMed:20940255}

#### Tissue Location

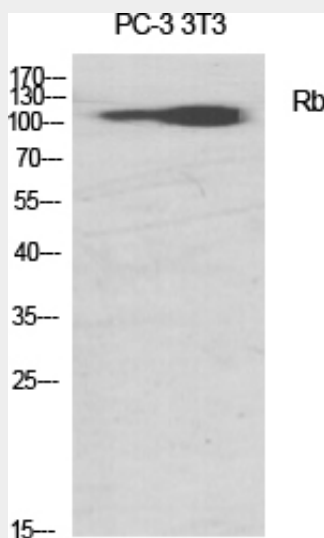
Expressed in the retina. Expressed in foreskin keratinocytes (at protein level) (PubMed:20940255)

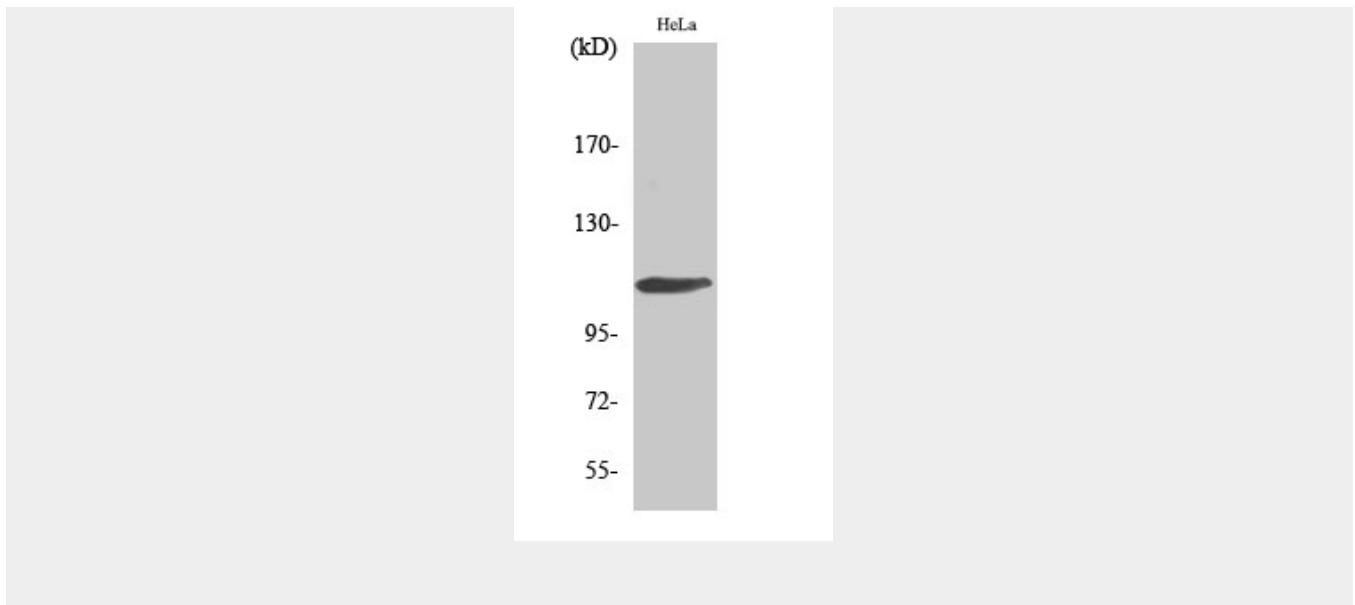
### Rb Polyclonal Antibody - Protocols

Provided below are standard protocols that you may find useful for product applications.

- [Western Blot](#)
- [Blocking Peptides](#)
- [Dot Blot](#)
- [Immunohistochemistry](#)
- [Immunofluorescence](#)
- [Immunoprecipitation](#)
- [Flow Cytometry](#)
- [Cell Culture](#)

### Rb Polyclonal Antibody - Images





### **Rb Polyclonal Antibody - Background**

Key regulator of entry into cell division that acts as a tumor suppressor. Promotes G0-G1 transition when phosphorylated by CDK3/cyclin-C. Acts as a transcription repressor of E2F1 target genes. The underphosphorylated, active form of RB1 interacts with E2F1 and represses its transcription activity, leading to cell cycle arrest. Directly involved in heterochromatin formation by maintaining overall chromatin structure and, in particular, that of constitutive heterochromatin by stabilizing histone methylation. Recruits and targets histone methyltransferases SUV39H1, KMT5B and KMT5C, leading to epigenetic transcriptional repression. Controls histone H4 'Lys-20' trimethylation. Inhibits the intrinsic kinase activity of TAF1. Mediates transcriptional repression by SMARCA4/BRG1 by recruiting a histone deacetylase (HDAC) complex to the c-FOS promoter. In resting neurons, transcription of the c-FOS promoter is inhibited by BRG1-dependent recruitment of a phospho-RB1-HDAC1 repressor complex. Upon calcium influx, RB1 is dephosphorylated by calcineurin, which leads to release of the repressor complex (By similarity).