

RBQ-3 Polyclonal Antibody
Catalog # AP72212**Specification**

RBQ-3 Polyclonal Antibody - Product Information

Application	WB
Primary Accession	Q15291
Reactivity	Human, Mouse, Rat
Host	Rabbit
Clonality	Polyclonal

RBQ-3 Polyclonal Antibody - Additional Information**Gene ID** 5929**Other Names**

RBBP5; RBQ3; Retinoblastoma-binding protein 5; RBBP-5; Retinoblastoma-binding protein RBQ-3

Dilution

WB~~Western Blot: 1/500 - 1/2000. ELISA: 1/10000. Not yet tested in other applications.

Format

Liquid in PBS containing 50% glycerol, 0.5% BSA and 0.09% (W/V) sodium azide.

Storage Conditions

-20°C

RBQ-3 Polyclonal Antibody - Protein Information**Name** RBBP5**Synonyms** RBQ3**Function**

In embryonic stem (ES) cells, plays a crucial role in the differentiation potential, particularly along the neural lineage, regulating gene induction and H3 'Lys-4' methylation at key developmental loci, including that mediated by retinoic acid (By similarity). Does not affect ES cell self-renewal (By similarity). Component or associated component of some histone methyltransferase complexes which regulates transcription through recruitment of those complexes to gene promoters (PubMed: [19131338](http://www.uniprot.org/citations/19131338)). As part of the MLL1/MLL complex, involved in mono-, di- and trimethylation at 'Lys-4' of histone H3 (PubMed: [19556245](http://www.uniprot.org/citations/19556245)). Histone H3 'Lys-4' methylation represents a specific tag for epigenetic transcriptional activation (PubMed: [19556245](http://www.uniprot.org/citations/19556245)). In association with ASH2L and WDR5, stimulates the histone methyltransferase activities of KMT2A, KMT2B, KMT2C, KMT2D, SETD1A and SETD1B (PubMed: [21220120](http://www.uniprot.org/citations/21220120)), PubMed: [21220120](http://www.uniprot.org/citations/21220120)).

<http://www.uniprot.org/citations/22266653>

Cellular Location

Nucleus.

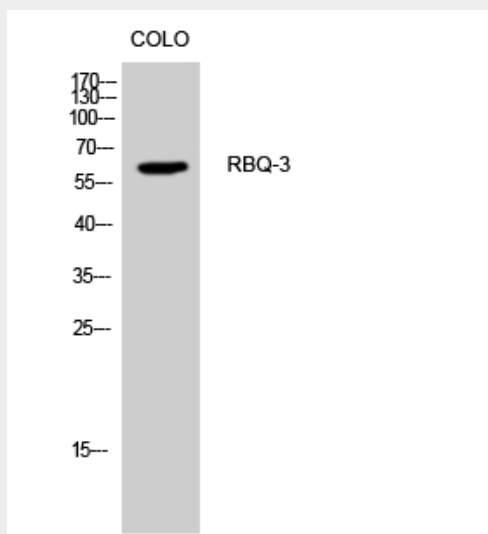
Tissue Location

Ubiquitously expressed.

RBQ-3 Polyclonal Antibody - Protocols

Provided below are standard protocols that you may find useful for product applications.

- [Western Blot](#)
- [Blocking Peptides](#)
- [Dot Blot](#)
- [Immunohistochemistry](#)
- [Immunofluorescence](#)
- [Immunoprecipitation](#)
- [Flow Cytometry](#)
- [Cell Culture](#)

RBQ-3 Polyclonal Antibody - Images

Western Blot analysis of CoLo cells using RBQ-3 Polyclonal Antibody cells nucleus extracted by Minute TM Cytoplasmic and Nuclear Fractionation kit (SC-003, Invent biotech, MN, USA).

RBQ-3 Polyclonal Antibody - Background

In embryonic stem (ES) cells, plays a crucial role in the differentiation potential, particularly along the neural lineage, regulating gene induction and H3 'Lys-4' methylation at key developmental loci, including that mediated by retinoic acid (By similarity). As part of the MLL1/MLL complex, involved in mono-, di- and trimethylation at 'Lys-4' of histone H3. Histone H3 'Lys-4' methylation represents a specific tag for epigenetic transcriptional activation.