

Recoverin Polyclonal Antibody
Catalog # AP72220**Specification**

Recoverin Polyclonal Antibody - Product Information

Application	WB, IHC-P, IF
Primary Accession	P35243
Reactivity	Human, Mouse
Host	Rabbit
Clonality	Polyclonal

Recoverin Polyclonal Antibody - Additional Information**Gene ID** 5957**Other Names**

RCVRN; RCV1; Recoverin; Cancer-associated retinopathy protein; Protein CAR

Dilution

WB~~Western Blot: 1/500 - 1/2000. Immunohistochemistry: 1/100 - 1/300. Immunofluorescence: 1/200 - 1/1000. ELISA: 1/20000. Not yet tested in other applications.

IHC-P~~N/A

IF~~1:50~200

Format

Liquid in PBS containing 50% glycerol, 0.5% BSA and 0.09% (W/V) sodium azide.

Storage Conditions

-20°C

Recoverin Polyclonal Antibody - Protein Information**Name** RCVRN**Synonyms** RCV1**Function**

Acts as a calcium sensor and regulates phototransduction of cone and rod photoreceptor cells (By similarity). Modulates light sensitivity of cone photoreceptor in dark and dim conditions (By similarity). In response to high Ca(2+) levels induced by low light levels, prolongs RHO/rhodopsin activation in rod photoreceptor cells by binding to and inhibiting GRK1-mediated phosphorylation of RHO/rhodopsin (By similarity). Plays a role in scotopic vision/enhances vision in dim light by enhancing signal transfer between rod photoreceptors and rod bipolar cells (By similarity). Improves rod photoreceptor sensitivity in dim light and mediates response of rod photoreceptors to facilitate detection of change and motion in bright light (By similarity).

Cellular Location

Photoreceptor inner segment {ECO:0000250|UniProtKB:P34057}. Cell projection, cilium,

photoreceptor outer segment {ECO:0000250|UniProtKB:P34057}. Photoreceptor outer segment membrane {ECO:0000250|UniProtKB:P21457}; Lipid-anchor {ECO:0000250|UniProtKB:P21457}; Cytoplasmic side {ECO:0000250|UniProtKB:P21457}. Perikaryon {ECO:0000250|UniProtKB:P34057}. Note=Primarily expressed in the inner segments of light-adapted rod photoreceptors, approximately 10% of which translocates from photoreceptor outer segments upon light stimulation (By similarity). Targeting of myristoylated protein to rod photoreceptor outer segments is calcium dependent (By similarity) {ECO:0000250|UniProtKB:P21457, ECO:0000250|UniProtKB:P34057}

Tissue Location

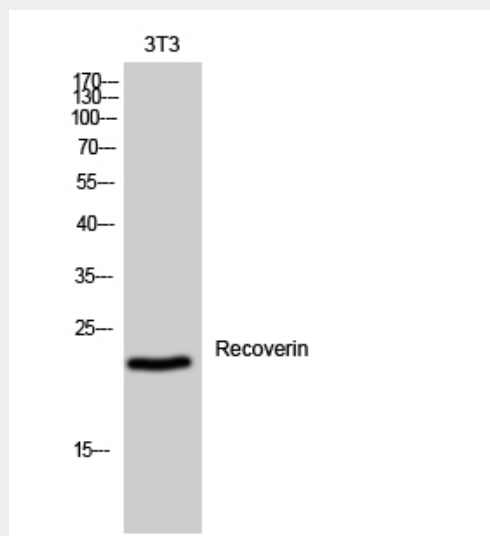
Retina and pineal gland.

Recoverin Polyclonal Antibody - Protocols

Provided below are standard protocols that you may find useful for product applications.

- [Western Blot](#)
- [Blocking Peptides](#)
- [Dot Blot](#)
- [Immunohistochemistry](#)
- [Immunofluorescence](#)
- [Immunoprecipitation](#)
- [Flow Cytometry](#)
- [Cell Culture](#)

Recoverin Polyclonal Antibody - Images



Recoverin Polyclonal Antibody - Background

Seems to be implicated in the pathway from retinal rod guanylate cyclase to rhodopsin. May be involved in the inhibition of the phosphorylation of rhodopsin in a calcium-dependent manner. The calcium-bound recoverin prolongs the photoresponse.