

Rhophilin Polyclonal Antibody
Catalog # AP72272**Specification**

Rhophilin Polyclonal Antibody - Product Information

Application	WB
Primary Accession	Q8TCX5
Reactivity	Human
Host	Rabbit
Clonality	Polyclonal

Rhophilin Polyclonal Antibody - Additional Information

Gene ID 114822

Other Names

RHPN1; KIAA1929; Rhophilin-1; GTP-Rho-binding protein 1

Dilution

WB~~Western Blot: 1/500 - 1/2000. ELISA: 1/10000. Not yet tested in other applications.

Format

Liquid in PBS containing 50% glycerol, 0.5% BSA and 0.09% (W/V) sodium azide.

Storage Conditions

-20°C

Rhophilin Polyclonal Antibody - Protein Information

Name RHPN1 ([HGNC:19973](#))

Synonyms KIAA1929

Function

Has no enzymatic activity. May serve as a target for Rho, and interact with some cytoskeletal component upon Rho binding or relay a Rho signal to other molecules.

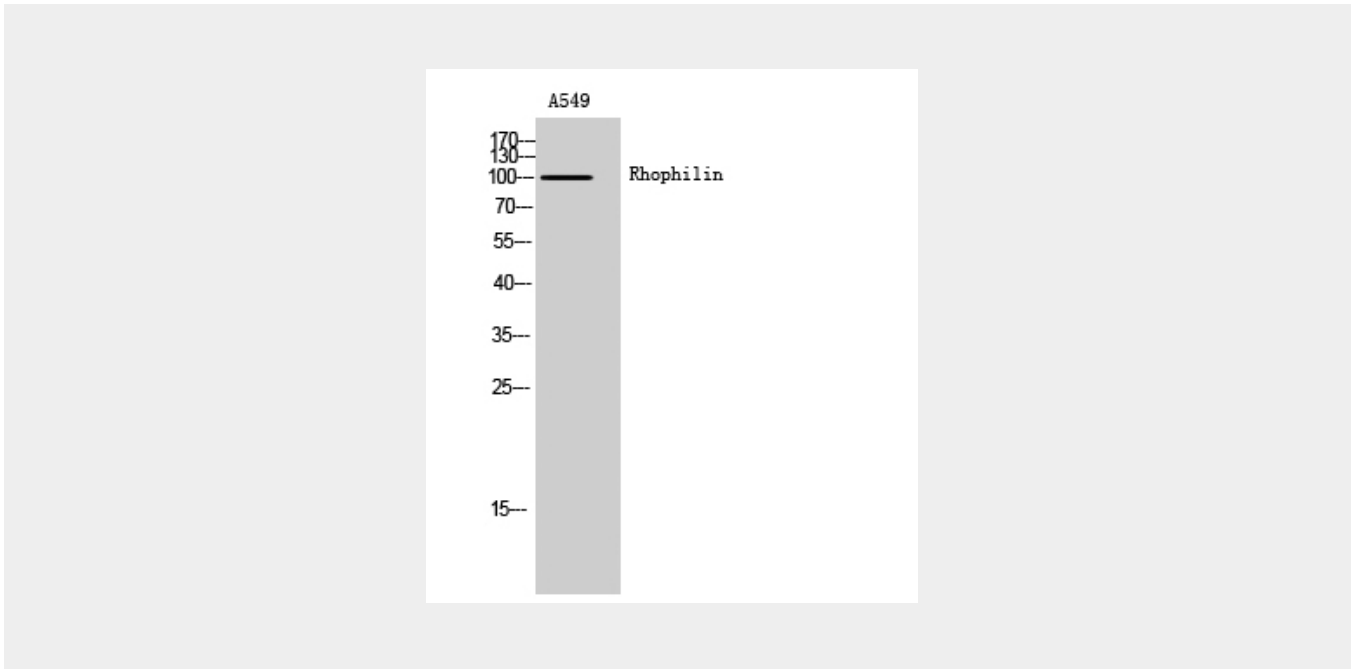
Rhophilin Polyclonal Antibody - Protocols

Provided below are standard protocols that you may find useful for product applications.

- [Western Blot](#)
- [Blocking Peptides](#)
- [Dot Blot](#)
- [Immunohistochemistry](#)
- [Immunofluorescence](#)

- [Immunoprecipitation](#)
- [Flow Cytometry](#)
- [Cell Culture](#)

Rhophilin Polyclonal Antibody - Images



Rhophilin Polyclonal Antibody - Background

Has no enzymatic activity. May serve as a target for Rho, and interact with some cytoskeletal component upon Rho binding or relay a Rho signal to other molecules.