

RIAM Polyclonal Antibody
Catalog # AP72274**Specification**

RIAM Polyclonal Antibody - Product Information

Application	WB
Primary Accession	Q7Z5R6
Reactivity	Human
Host	Rabbit
Clonality	Polyclonal

RIAM Polyclonal Antibody - Additional Information**Gene ID** 54518**Other Names**

APBB1IP; PREL1; RARP1; RIAM; Amyloid beta A4 precursor protein-binding family B member 1-interacting protein; APBB1-interacting protein 1; Proline-rich EVH1 ligand 1; PREL-1; Proline-rich protein 73; Rap1-GTP-interacting adapter molecule; R

Dilution

WB~~Western Blot: 1/500 - 1/2000. ELISA: 1/10000. Not yet tested in other applications.

Format

Liquid in PBS containing 50% glycerol, 0.5% BSA and 0.09% (W/V) sodium azide.

Storage Conditions

-20°C

RIAM Polyclonal Antibody - Protein Information**Name** APBB1IP**Synonyms** PREL1, RARP1, RIAM**Function**

Appears to function in the signal transduction from Ras activation to actin cytoskeletal remodeling. Suppresses insulin-induced promoter activities through AP1 and SRE. Mediates Rap1-induced adhesion.

Cellular Location

Cell membrane; Peripheral membrane protein. Cell projection, lamellipodium Cell junction, focal adhesion. Cytoplasm, cytoskeleton. Note=Colocalizes with ENA/VASP proteins at lamellipodia tips and focal adhesions, and F-actin at the leading edge. At the membrane surface, associates, via the PH domain, preferentially with the inositol phosphates, PtdIns(5)P and PtdIns(3)P. This binding appears to be necessary for the efficient interaction of the RA domain to Ras-GTPases (By similarity).

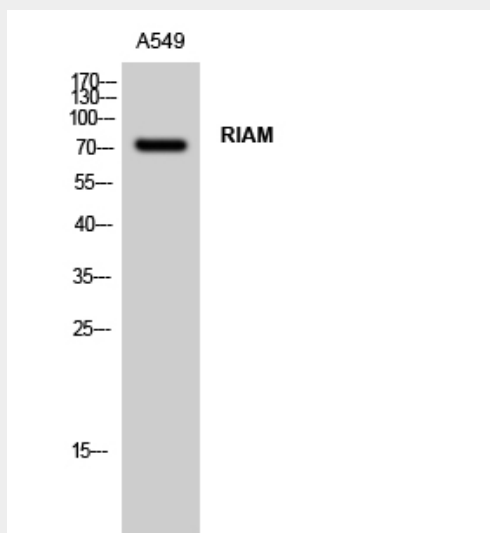
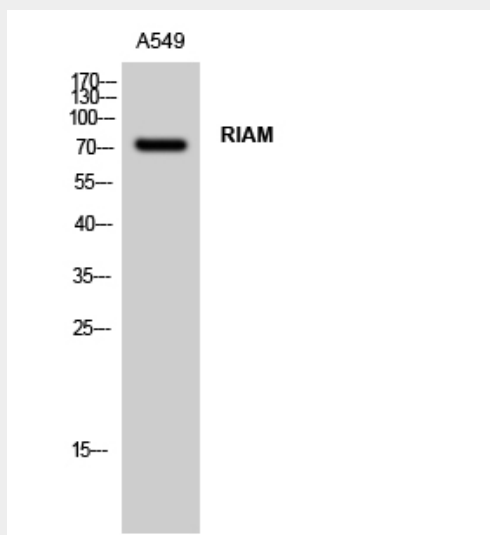
Tissue Location

Widely expressed with high expression in thymus, spleen, lymph node, bone marrow and peripheral leukocytes

RIAM Polyclonal Antibody - Protocols

Provided below are standard protocols that you may find useful for product applications.

- [Western Blot](#)
- [Blocking Peptides](#)
- [Dot Blot](#)
- [Immunohistochemistry](#)
- [Immunofluorescence](#)
- [Immunoprecipitation](#)
- [Flow Cytometry](#)
- [Cell Culture](#)

RIAM Polyclonal Antibody - Images

RIAM Polyclonal Antibody - Background

Appears to function in the signal transduction from Ras activation to actin cytoskeletal remodeling. Suppresses insulin- induced promoter activities through AP1 and SRE. Mediates Rap1- induced adhesion.