

**Ribosomal Protein L10L Polyclonal Antibody**  
**Catalog # AP72276****Specification**

---

**Ribosomal Protein L10L Polyclonal Antibody - Product Information**

Application	WB
Primary Accession	<a href="#">Q96L21</a>
Reactivity	Human, Monkey
Host	Rabbit
Clonality	Polyclonal

**Ribosomal Protein L10L Polyclonal Antibody - Additional Information****Gene ID** 140801**Other Names**

RPL10L; 60S ribosomal protein L10-like

**Dilution**

WB~~Western Blot: 1/500 - 1/2000. Immunohistochemistry: 1/100 - 1/300. ELISA: 1/10000. Not yet tested in other applications.

**Format**

Liquid in PBS containing 50% glycerol, 0.5% BSA and 0.09% (W/V) sodium azide.

**Storage Conditions**

-20°C

**Ribosomal Protein L10L Polyclonal Antibody - Protein Information****Name** RPL10L {ECO:0000303|PubMed:12490704, ECO:0000312|HGNC:HGNC:17976}**Function**

Testis-specific component of the ribosome, which is required for the transition from prophase to metaphase in male meiosis I (By similarity). Compensates for the inactivated X-linked RPL10 paralog during spermatogenesis (PubMed:<a href="http://www.uniprot.org/citations/12490704" target="\_blank">12490704</a>). The ribosome is a large ribonucleoprotein complex responsible for the synthesis of proteins in the cell (PubMed:<a href="http://www.uniprot.org/citations/23636399" target="\_blank">23636399</a>, PubMed:<a href="http://www.uniprot.org/citations/25901680" target="\_blank">25901680</a>, PubMed:<a href="http://www.uniprot.org/citations/32669547" target="\_blank">32669547</a>). The male germ cell-specific ribosome displays a ribosomal polypeptide exit tunnel of distinct size and charge states compared with the classical ribosome (By similarity). It is responsible for regulating the biosynthesis and folding of a subset of male germ-cell-specific proteins that are essential for the formation of sperm (By similarity).

**Cellular Location**

Cytoplasm

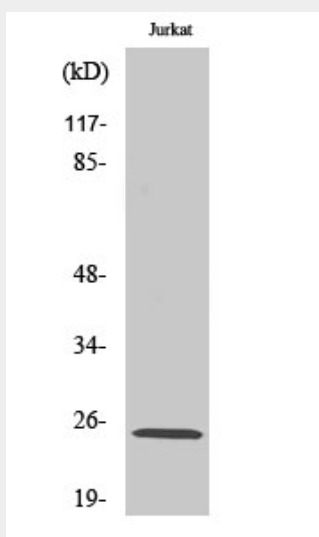
**Tissue Location**

Almost testis-specific (PubMed:12490704, PubMed:19333399, PubMed:28502657). Also expressed in pre- and postmenopausal ovary (PubMed:19333399).

**Ribosomal Protein L10L Polyclonal Antibody - Protocols**

Provided below are standard protocols that you may find useful for product applications.

- [Western Blot](#)
- [Blocking Peptides](#)
- [Dot Blot](#)
- [Immunohistochemistry](#)
- [Immunofluorescence](#)
- [Immunoprecipitation](#)
- [Flow Cytometry](#)
- [Cell Culture](#)

**Ribosomal Protein L10L Polyclonal Antibody - Images****Ribosomal Protein L10L Polyclonal Antibody - Background**

May play a role in compensating for the inactivated X- linked gene during spermatogenesis.