

Ribosomal Protein L15 Polyclonal Antibody
Catalog # AP72280**Specification**

Ribosomal Protein L15 Polyclonal Antibody - Product Information

Application	WB, IHC-P
Primary Accession	P61313
Reactivity	Human, Mouse, Rat
Host	Rabbit
Clonality	Polyclonal

Ribosomal Protein L15 Polyclonal Antibody - Additional Information**Gene ID** 6138**Other Names**

RPL15; EC45; TCBAP0781; 60S ribosomal protein L15

Dilution

WB~~Western Blot: 1/500 - 1/2000. Immunohistochemistry: 1/100 - 1/300. ELISA: 1/40000. Not yet tested in other applications.

IHC-P~~N/A

Format

Liquid in PBS containing 50% glycerol, 0.5% BSA and 0.09% (W/V) sodium azide.

Storage Conditions

-20°C

Ribosomal Protein L15 Polyclonal Antibody - Protein Information**Name** RPL15**Synonyms** EC45**Function**

Component of the large ribosomal subunit. The ribosome is a large ribonucleoprotein complex responsible for the synthesis of proteins in the cell.

Cellular Location

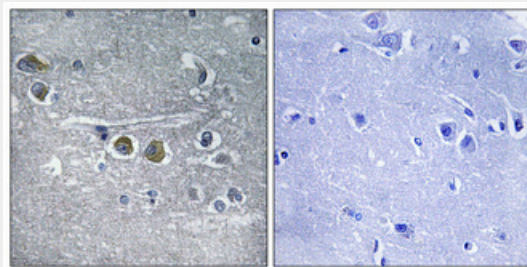
Cytoplasm.

Ribosomal Protein L15 Polyclonal Antibody - Protocols

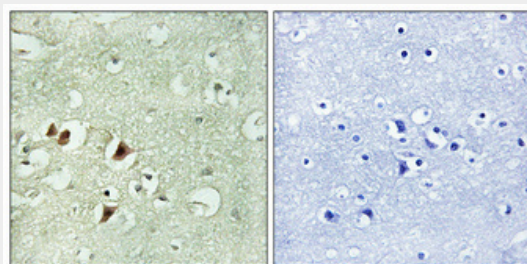
Provided below are standard protocols that you may find useful for product applications.

- [Western Blot](#)
- [Blocking Peptides](#)
- [Dot Blot](#)
- [Immunohistochemistry](#)
- [Immunofluorescence](#)
- [Immunoprecipitation](#)
- [Flow Cytometry](#)
- [Cell Culture](#)

Ribosomal Protein L15 Polyclonal Antibody - Images



Immunohistochemical analysis of paraffin-embedded Human brain. Antibody was diluted at 1:100(4°,overnight). High-pressure and temperature Tris-EDTA,pH8.0 was used for antigen retrieval. Negative contrl (right) obtained from antibody was pre-absorbed by immunogen peptide.



Immunohistochemical analysis of paraffin-embedded Human brain. Antibody was diluted at 1:100(4°,overnight). High-pressure and temperature Tris-EDTA,pH8.0 was used for antigen retrieval. Negative contrl (right) obtained from antibody was pre-absorbed by immunogen peptide.