

**Ribosomal Protein L34 Polyclonal Antibody**  
Catalog # AP72291**Specification****Ribosomal Protein L34 Polyclonal Antibody - Product Information**

Application	WB, IHC-P, IF
Primary Accession	<a href="#">P49207</a>
Reactivity	Human, Mouse, Rat
Host	Rabbit
Clonality	Polyclonal

**Ribosomal Protein L34 Polyclonal Antibody - Additional Information****Gene ID** 6164**Other Names**

RPL34; 60S ribosomal protein L34

**Dilution**

WB~~Western Blot: 1/500 - 1/2000. Immunohistochemistry: 1/100 - 1/300. Immunofluorescence: 1/200 - 1/1000. ELISA: 1/20000. Not yet tested in other applications.

IHC-P~~N/A

IF~~1:50~200

**Format**

Liquid in PBS containing 50% glycerol, 0.5% BSA and 0.09% (W/V) sodium azide.

**Storage Conditions**

-20°C

**Ribosomal Protein L34 Polyclonal Antibody - Protein Information****Name** RPL34**Function**

Component of the large ribosomal subunit (PubMed: [12962325](http://www.uniprot.org/citations/12962325), PubMed: [23636399](http://www.uniprot.org/citations/23636399), PubMed: [25901680](http://www.uniprot.org/citations/25901680), PubMed: [25957688](http://www.uniprot.org/citations/25957688), PubMed: [32669547](http://www.uniprot.org/citations/32669547)). The ribosome is a large ribonucleoprotein complex responsible for the synthesis of proteins in the cell (PubMed: [12962325](http://www.uniprot.org/citations/12962325), PubMed: [23636399](http://www.uniprot.org/citations/23636399), PubMed: [25901680](http://www.uniprot.org/citations/25901680), PubMed: [25957688](http://www.uniprot.org/citations/25957688), PubMed: [32669547](http://www.uniprot.org/citations/32669547)).

### Cellular Location

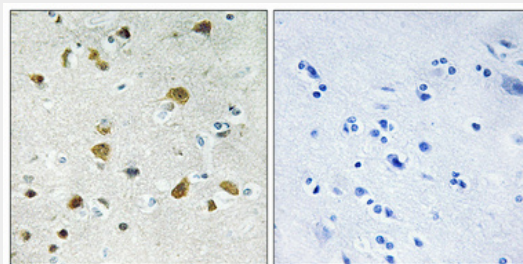
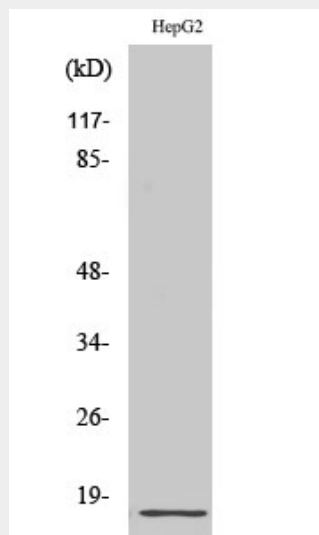
Cytoplasm, cytosol. Cytoplasm Endoplasmic reticulum {ECO:0000250|UniProtKB:Q29223}.  
Note=Detected on cytosolic polysomes (PubMed:25957688). Detected in ribosomes that are associated with the rough endoplasmic reticulum (By similarity) {ECO:0000250|UniProtKB:Q29223, ECO:0000269|PubMed:25957688}

### Ribosomal Protein L34 Polyclonal Antibody - Protocols

Provided below are standard protocols that you may find useful for product applications.

- [Western Blot](#)
- [Blocking Peptides](#)
- [Dot Blot](#)
- [Immunohistochemistry](#)
- [Immunofluorescence](#)
- [Immunoprecipitation](#)
- [Flow Cytometry](#)
- [Cell Culture](#)

### Ribosomal Protein L34 Polyclonal Antibody - Images



### Ribosomal Protein L34 Polyclonal Antibody - Background

Component of the large ribosomal subunit.