

**PHKG1 Antibody (Center)**  
**Purified Rabbit Polyclonal Antibody (Pab)**  
**Catalog # AP7232C****Specification**

---

**PHKG1 Antibody (Center) - Product Information**

Application	IHC-P, WB,E
Primary Accession	<a href="#">Q16816</a>
Other Accession	<a href="#">P13286</a> , <a href="#">P00518</a>
Reactivity	Human
Predicted	Rabbit, Rat
Host	Rabbit
Clonality	Polyclonal
Isotype	Rabbit IgG
Calculated MW	45024
Antigen Region	302-332

**PHKG1 Antibody (Center) - Additional Information****Gene ID** 5260**Other Names**

Phosphorylase b kinase gamma catalytic chain, skeletal muscle/heart isoform, PHK-gamma-M, Phosphorylase kinase subunit gamma-1, Serine/threonine-protein kinase PHKG1, PHKG1, PHKG

**Target/Specificity**

This PHKG1 antibody is generated from rabbits immunized with a KLH conjugated synthetic peptide between 302-332 amino acids from the Central region of human PHKG1.

**Dilution**

IHC-P~~1:50~100

WB~~1:1000

E~~Use at an assay dependent concentration.

**Format**

Purified polyclonal antibody supplied in PBS with 0.09% (W/V) sodium azide. This antibody is purified through a protein A column, followed by peptide affinity purification.

**Storage**

Maintain refrigerated at 2-8°C for up to 2 weeks. For long term storage store at -20°C in small aliquots to prevent freeze-thaw cycles.

**Precautions**

PHKG1 Antibody (Center) is for research use only and not for use in diagnostic or therapeutic procedures.

**PHKG1 Antibody (Center) - Protein Information**

**Name** PHKG1

**Synonyms** PHKG

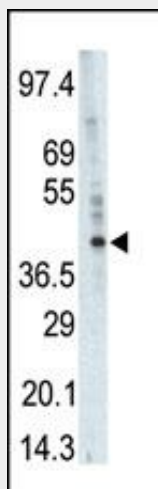
**Function** Catalytic subunit of the phosphorylase b kinase (PHK), which mediates the neural and hormonal regulation of glycogen breakdown (glycogenolysis) by phosphorylating and thereby activating glycogen phosphorylase. In vitro, phosphorylates PYGM, TNNI3, MAPT/TAU, GAP43 and NRGN/RC3 (By similarity).

### **PHKG1 Antibody (Center) - Protocols**

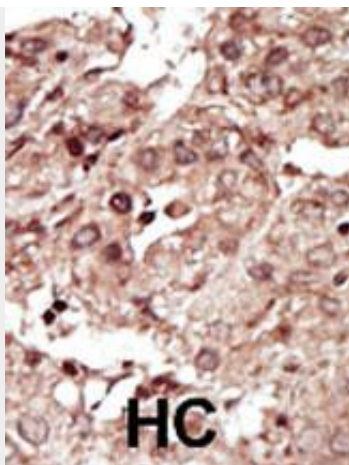
Provided below are standard protocols that you may find useful for product applications.

- [Western Blot](#)
- [Blocking Peptides](#)
- [Dot Blot](#)
- [Immunohistochemistry](#)
- [Immunofluorescence](#)
- [Immunoprecipitation](#)
- [Flow Cytometry](#)
- [Cell Culture](#)

### **PHKG1 Antibody (Center) - Images**



Western blot analysis of anti-PHKG1 Pab (Cat. #AP7232c) in A375 cell lysate. PHKG1 (arrow) was detected using purified Pab. Secondary HRP-anti-rabbit was used for signal visualization with chemiluminescence.



Formalin-fixed and paraffin-embedded human cancer tissue reacted with the primary antibody, which was peroxidase-conjugated to the secondary antibody, followed by AEC staining. This data demonstrates the use of this antibody for immunohistochemistry; clinical relevance has not been evaluated. BC = breast carcinoma; HC = hepatocarcinoma.

#### **PHKG1 Antibody (Center) - Background**

This gene is a member of the Ser/Thr protein kinase family and encodes a protein with one protein kinase domain and two calmodulin-binding domains. This protein is the catalytic member of a 16 subunit protein kinase complex which contains equimolar ratios of 4 subunit types. The complex is a crucial glycogenolytic regulatory enzyme. This gene has two pseudogenes at chromosome 7q11.21 and one at chromosome 11p11.12.

#### **PHKG1 Antibody (Center) - References**

Wehner, M., et al., Hum. Genet. 96(5):616-618 (1995).  
Jones, T.A., et al., Biochim. Biophys. Acta 1048(1):24-29 (1990).