

Rit1 Polyclonal Antibody
Catalog # AP72332**Specification**

Rit1 Polyclonal Antibody - Product Information

Application	WB
Primary Accession	Q92963
Reactivity	Human, Mouse
Host	Rabbit
Clonality	Polyclonal

Rit1 Polyclonal Antibody - Additional Information**Gene ID** 6016**Other Names**RIT1; RIBB; RIT; ROC1; GTP-binding protein Rit1; Ras-like protein expressed in many tissues;
Ras-like without CAAX protein 1**Dilution**

WB~~Western Blot: 1/500 - 1/2000. ELISA: 1/10000. Not yet tested in other applications.

Format

Liquid in PBS containing 50% glycerol, 0.5% BSA and 0.09% (W/V) sodium azide.

Storage Conditions

-20°C

Rit1 Polyclonal Antibody - Protein Information**Name** RIT1**Synonyms** RIBB, RIT, ROC1**Function**

Plays a crucial role in coupling NGF stimulation to the activation of both EPHB2 and MAPK14 signaling pathways and in NGF- dependent neuronal differentiation. Involved in ELK1 transactivation through the Ras-MAPK signaling cascade that mediates a wide variety of cellular functions, including cell proliferation, survival, and differentiation.

Cellular Location

Cell membrane.

Tissue Location

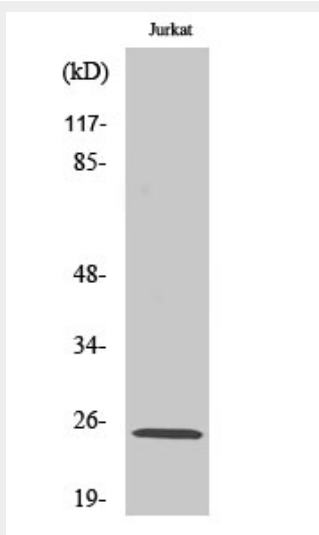
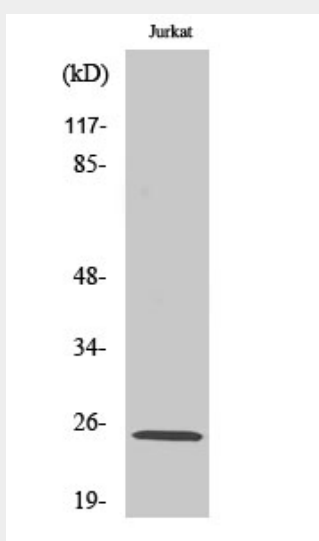
Expressed in many tissues.

Rit1 Polyclonal Antibody - Protocols

Provided below are standard protocols that you may find useful for product applications.

- [Western Blot](#)
- [Blocking Peptides](#)
- [Dot Blot](#)
- [Immunohistochemistry](#)
- [Immunofluorescence](#)
- [Immunoprecipitation](#)
- [Flow Cytometry](#)
- [Cell Culture](#)

Rit1 Polyclonal Antibody - Images



Rit1 Polyclonal Antibody - Background

Plays a crucial role in coupling NGF stimulation to the activation of both EPHB2 and MAPK14

signaling pathways and in NGF- dependent neuronal differentiation. Involved in ELK1 transactivation through the Ras-MAPK signaling cascade that mediates a wide variety of cellular functions, including cell proliferation, survival, and differentiation.