

**S-100A16 Polyclonal Antibody**  
Catalog # AP72382**Specification****S-100A16 Polyclonal Antibody - Product Information**

Application	WB, IHC-P
Primary Accession	<a href="#">Q96F06</a>
Reactivity	Human, Rat
Host	Rabbit
Clonality	Polyclonal

**S-100A16 Polyclonal Antibody - Additional Information**

Gene ID 140576

**Other Names**

S100A16; S100F; AAG13; Protein S100-A16; Aging-associated gene 13 protein; Protein S100-F; S100 calcium-binding protein A16

**Dilution**

WB~~Western Blot: 1/500 - 1/2000. Immunohistochemistry: 1/100 - 1/300. ELISA: 1/40000. Not yet tested in other applications.

IHC-P~~N/A

**Format**

Liquid in PBS containing 50% glycerol, 0.5% BSA and 0.09% (W/V) sodium azide.

**Storage Conditions**

-20°C

**S-100A16 Polyclonal Antibody - Protein Information**Name S100A16 ([HGNC:20441](#))

Synonyms S100F

**Function**

Calcium-binding protein. Binds one calcium ion per monomer (PubMed:&lt;a href="http://www.uniprot.org/citations/17030513" target="\_blank"&gt;17030513&lt;/a&gt;). Can promote differentiation of adipocytes (in vitro) (By similarity). Overexpression in preadipocytes increases their proliferation, enhances adipogenesis and reduces insulin-stimulated glucose uptake (By similarity).

**Cellular Location**

Nucleus, nucleolus. Cytoplasm. Note=Primarily nucleolar. A high intracellular calcium level induces nucleolar exit and nucleocytoplasmic transport, whereas a low intracellular calcium level leads to nuclear translocation and accumulation within specific region of nucleoli (PubMed:17030513)

### Tissue Location

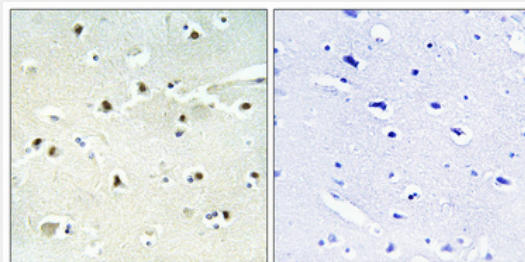
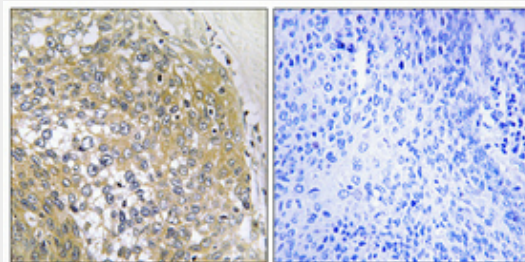
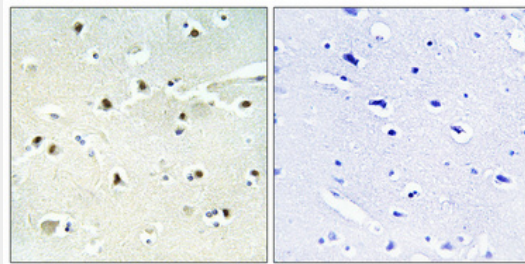
Ubiquitous (PubMed:14684152). Highly expressed in esophagus, adipose tissues and colon. Expressed at lower level in lung, brain, pancreas and skeletal muscle. Expression is up-regulated in tumors of bladder, lung, thyroid gland, pancreas and ovary (PubMed:14684152). Expressed in astrocytes (PubMed:17030513)

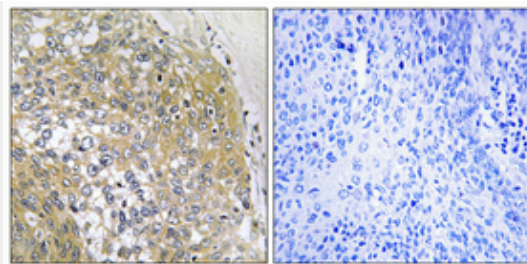
### S-100A16 Polyclonal Antibody - Protocols

Provided below are standard protocols that you may find useful for product applications.

- [Western Blot](#)
- [Blocking Peptides](#)
- [Dot Blot](#)
- [Immunohistochemistry](#)
- [Immunofluorescence](#)
- [Immunoprecipitation](#)
- [Flow Cytometry](#)
- [Cell Culture](#)

### S-100A16 Polyclonal Antibody - Images





### **S-100A16 Polyclonal Antibody - Background**

Calcium-binding protein. Binds one calcium ion per monomer (PubMed:17030513). Can promote differentiation of adipocytes (in vitro) (By similarity). Overexpression in preadipocytes increases their proliferation, enhances adipogenesis and reduces insulin-stimulated glucose uptake (By similarity).