

Saposin Polyclonal Antibody
Catalog # AP72396**Specification**

Saposin Polyclonal Antibody - Product Information

Application	WB, IHC-P
Primary Accession	P07602
Reactivity	Human
Host	Rabbit
Clonality	Polyclonal

Saposin Polyclonal Antibody - Additional Information**Gene ID** 5660**Other Names**

PSAP; GLBA; SAP1; Proactivator polypeptide

Dilution

WB~~Western Blot: 1/500 - 1/2000. Immunohistochemistry: 1/100 - 1/300. ELISA: 1/20000. Not yet tested in other applications.

IHC-P~~N/A

Format

Liquid in PBS containing 50% glycerol, 0.5% BSA and 0.09% (W/V) sodium azide.

Storage Conditions

-20°C

Saposin Polyclonal Antibody - Protein Information**Name** PSAP**Synonyms** GLBA, SAP1**Function**

Saposin-A and saposin-C stimulate the hydrolysis of glucosylceramide by beta-glucosylceramidase (EC 3.2.1.45) and galactosylceramide by beta-galactosylceramidase (EC 3.2.1.46). Saposin- C apparently acts by combining with the enzyme and acidic lipid to form an activated complex, rather than by solubilizing the substrate. Saposin-D is a specific sphingomyelin phosphodiesterase activator (EC 3.1.4.12). Saposins are specific low-molecular mass non-enzymic proteins, they participate in the lysosomal degradation of sphingolipids, which takes place by the sequential action of specific hydrolases.

Cellular Location

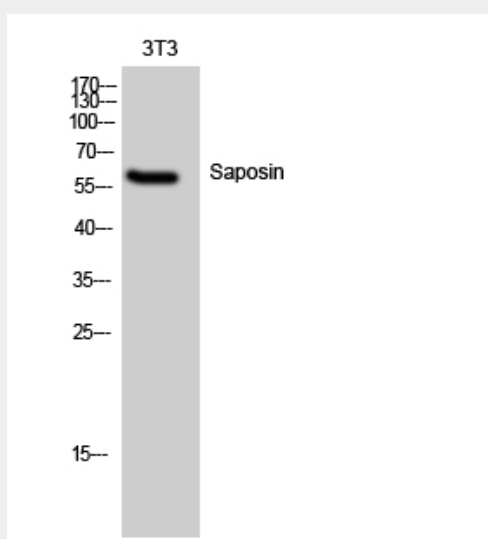
Lysosome

Saposin Polyclonal Antibody - Protocols

Provided below are standard protocols that you may find useful for product applications.

- [Western Blot](#)
- [Blocking Peptides](#)
- [Dot Blot](#)
- [Immunohistochemistry](#)
- [Immunofluorescence](#)
- [Immunoprecipitation](#)
- [Flow Cytometry](#)
- [Cell Culture](#)

Saposin Polyclonal Antibody - Images



Western Blot analysis of 3T3 cells using Saposin Polyclonal Antibody

Saposin Polyclonal Antibody - Background

Saposin-A and saposin-C stimulate the hydrolysis of glucosylceramide by beta-glucosylceramidase (EC 3.2.1.45) and galactosylceramide by beta-galactosylceramidase (EC 3.2.1.46). Saposin-C apparently acts by combining with the enzyme and acidic lipid to form an activated complex, rather than by solubilizing the substrate. Saposin-D is a specific sphingomyelin phosphodiesterase activator (EC 3.1.4.12). Saposins are specific low-molecular mass non-enzymic proteins, they participate in the lysosomal degradation of sphingolipids, which takes place by the sequential action of specific hydrolases.