

**SCCA2 Polyclonal Antibody**  
**Catalog # AP72403****Specification**

---

**SCCA2 Polyclonal Antibody - Product Information**

Application	<b>WB</b>
Primary Accession	<a href="#">P48594</a>
Reactivity	<b>Human</b>
Host	<b>Rabbit</b>
Clonality	<b>Polyclonal</b>

**SCCA2 Polyclonal Antibody - Additional Information****Gene ID** 6318**Other Names**

SERPINB4; PI11; SCCA2; Serpin B4; Leupin; Peptidase inhibitor 11; PI-11; Squamous cell carcinoma antigen 2; SCCA-2

**Dilution**

WB~~Western Blot: 1/500 - 1/2000. ELISA: 1/5000. Not yet tested in other applications.

**Format**

Liquid in PBS containing 50% glycerol, 0.5% BSA and 0.09% (W/V) sodium azide.

**Storage Conditions**

-20°C

**SCCA2 Polyclonal Antibody - Protein Information****Name** SERPINB4**Synonyms** PI11, SCCA2**Function**

May act as a protease inhibitor to modulate the host immune response against tumor cells.

**Cellular Location**

Cytoplasm. Note=Seems to also be secreted in plasma by cancerous cells but at a low level

**Tissue Location**

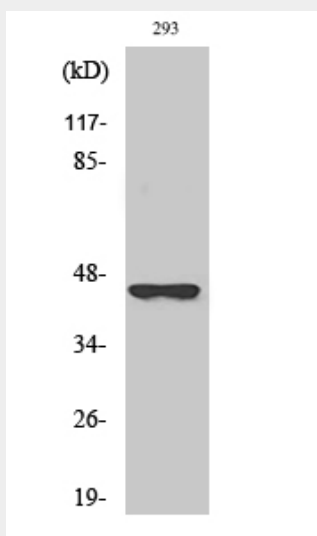
Squamous cells.

**SCCA2 Polyclonal Antibody - Protocols**

Provided below are standard protocols that you may find useful for product applications.

- [Western Blot](#)
- [Blocking Peptides](#)
- [Dot Blot](#)
- [Immunohistochemistry](#)
- [Immunofluorescence](#)
- [Immunoprecipitation](#)
- [Flow Cytometry](#)
- [Cell Culture](#)

#### SCCA2 Polyclonal Antibody - Images



#### SCCA2 Polyclonal Antibody - Background

May act as a protease inhibitor to modulate the host immune response against tumor cells.