

SEMA4A Polyclonal Antibody
Catalog # AP72418**Specification**

SEMA4A Polyclonal Antibody - Product Information

Application	WB
Primary Accession	Q9H3S1
Reactivity	Human, Mouse, Rat, Monkey
Host	Rabbit
Clonality	Polyclonal

SEMA4A Polyclonal Antibody - Additional Information**Gene ID** 64218**Other Names**

SEMA4A; SEMAB; SEMB; Semaphorin-4A; Semaphorin-B; Sema B

Dilution

WB~~Western Blot: 1/500 - 1/2000. Immunohistochemistry: 1/100 - 1/300. Immunofluorescence: 1/200 - 1/1000. ELISA: 1/20000. Not yet tested in other applications.

Format

Liquid in PBS containing 50% glycerol, 0.5% BSA and 0.09% (W/V) sodium azide.

Storage Conditions

-20°C

SEMA4A Polyclonal Antibody - Protein Information**Name** SEMA4A**Synonyms** SEMAB, SEMB**Function**

Cell surface receptor for PLXNB1, PLXNB2, PLXNB3 and PLXND1 that plays an important role in cell-cell signaling (By similarity). Regulates glutamatergic and GABAergic synapse development (By similarity). Promotes the development of inhibitory synapses in a PLXNB1-dependent manner and promotes the development of excitatory synapses in a PLXNB2-dependent manner (By similarity). Plays a role in priming antigen-specific T-cells, promotes differentiation of Th1 T- helper cells, and thereby contributes to adaptive immunity (By similarity). Promotes phosphorylation of TIMD2 (By similarity). Inhibits angiogenesis (By similarity). Promotes axon growth cone collapse (By similarity). Inhibits axonal extension by providing local signals to specify territories inaccessible for growing axons (By similarity).

Cellular Location

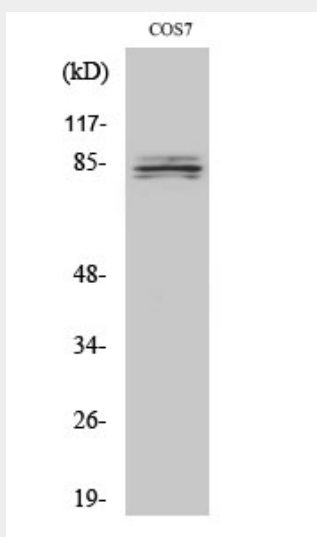
Cell membrane; Single-pass type I membrane protein

SEMA4A Polyclonal Antibody - Protocols

Provided below are standard protocols that you may find useful for product applications.

- [Western Blot](#)
- [Blocking Peptides](#)
- [Dot Blot](#)
- [Immunohistochemistry](#)
- [Immunofluorescence](#)
- [Immunoprecipitation](#)
- [Flow Cytometry](#)
- [Cell Culture](#)

SEMA4A Polyclonal Antibody - Images



SEMA4A Polyclonal Antibody - Background

Cell surface receptor for PLXNB1, PLXNB2, PLXNB3 and PLXND1 that plays an important role in cell-cell signaling (By similarity). Regulates glutamatergic and GABAergic synapse development (By similarity). Promotes the development of inhibitory synapses in a PLXNB1-dependent manner and promotes the development of excitatory synapses in a PLXNB2-dependent manner (By similarity). Plays a role in priming antigen-specific T-cells, promotes differentiation of Th1 T-helper cells, and thereby contributes to adaptive immunity (By similarity). Promotes phosphorylation of TIMD2 (By similarity). Inhibits angiogenesis (By similarity). Promotes axon growth cone collapse (By similarity). Inhibits axonal extension by providing local signals to specify territories inaccessible for growing axons (By similarity).