

**STK31 Antibody (N-term)**  
**Purified Rabbit Polyclonal Antibody (Pab)**  
**Catalog # AP7242a****Specification**

---

**STK31 Antibody (N-term) - Product Information**

Application	WB, IHC-P,E
Primary Accession	<a href="#">Q9BXU1</a>
Reactivity	Human, Rat
Host	Rabbit
Clonality	Polyclonal
Isotype	Rabbit IgG
Calculated MW	115694
Antigen Region	32-62

**STK31 Antibody (N-term) - Additional Information****Gene ID** 56164**Other Names**

Serine/threonine-protein kinase 31, Serine/threonine-protein kinase NYD-SPK, Sugen kinase 396, SgK396, STK31, SGK396

**Target/Specificity**

This STK31 antibody is generated from rabbits immunized with a KLH conjugated synthetic peptide between 32-62 amino acids from the N-terminal region of human STK31.

**Dilution**

WB~~1:1000

IHC-P~~1:50~100

E~~Use at an assay dependent concentration.

**Format**

Purified polyclonal antibody supplied in PBS with 0.09% (W/V) sodium azide. This antibody is purified through a protein A column, followed by peptide affinity purification.

**Storage**

Maintain refrigerated at 2-8°C for up to 2 weeks. For long term storage store at -20°C in small aliquots to prevent freeze-thaw cycles.

**Precautions**

STK31 Antibody (N-term) is for research use only and not for use in diagnostic or therapeutic procedures.

**STK31 Antibody (N-term) - Protein Information****Name** STK31

**Synonyms** SGK396

**Tissue Location**

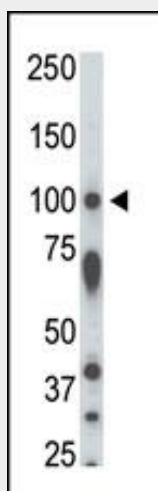
Testis specific.

**STK31 Antibody (N-term) - Protocols**

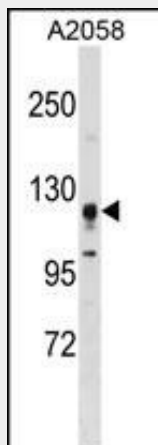
Provided below are standard protocols that you may find useful for product applications.

- [Western Blot](#)
- [Blocking Peptides](#)
- [Dot Blot](#)
- [Immunohistochemistry](#)
- [Immunofluorescence](#)
- [Immunoprecipitation](#)
- [Flow Cytometry](#)
- [Cell Culture](#)

**STK31 Antibody (N-term) - Images**

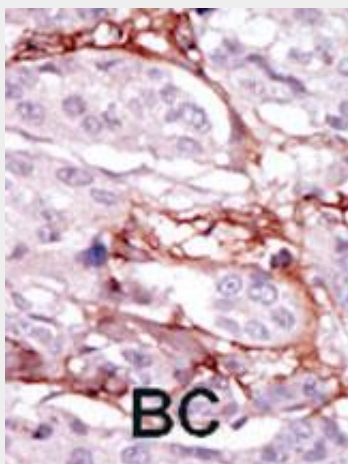


The anti-STK31 Pab (Cat. #AP7242a) is used in Western blot to detect STK31 in rat testis tissue lysate.



STK31 Antibody (F47) (Cat. #AP7242a) western blot analysis in A2058 cell line lysates

(35ug/lane). This demonstrates the STK31 antibody detected the STK31 protein (arrow).



Formalin-fixed and paraffin-embedded human cancer tissue reacted with the primary antibody, which was peroxidase-conjugated to the secondary antibody, followed by DAB staining. This data demonstrates the use of this antibody for immunohistochemistry; clinical relevance has not been evaluated. BC = breast carcinoma; HC = hepatocarcinoma.

#### **STK31 Antibody (N-term) - Background**

This gene is similar to a mouse gene that encodes a putative protein kinase with a tudor domain, and shows testis-specific expression. Alternative splicing results in multiple transcript variants encoding different isoforms.

#### **STK31 Antibody (N-term) - References**

Wang, P.J., et al., Nat. Genet. 27(4):422-426 (2001).