

Septin 6 Polyclonal Antibody
Catalog # AP72433**Specification**

Septin 6 Polyclonal Antibody - Product Information

Application	WB, IHC-P
Primary Accession	Q14141
Reactivity	Human, Mouse, Rat
Host	Rabbit
Clonality	Polyclonal

Septin 6 Polyclonal Antibody - Additional Information**Gene ID** 23157**Other Names**

SEPT6; KIAA0128; SEP2; Septin-6

Dilution

WB~~Western Blot: 1/500 - 1/2000. Immunohistochemistry: 1/100 - 1/300. ELISA: 1/40000. Not yet tested in other applications.

IHC-P~~N/A

Format

Liquid in PBS containing 50% glycerol, 0.5% BSA and 0.09% (W/V) sodium azide.

Storage Conditions

-20°C

Septin 6 Polyclonal Antibody - Protein Information**Name** SEPTIN6 ([HGNC:15848](#))**Synonyms** KIAA0128, SEP2, SEPT6**Function**

Filament-forming cytoskeletal GTPase. Required for normal organization of the actin cytoskeleton. Involved in cytokinesis. May play a role in HCV RNA replication. Forms a filamentous structure with SEPTIN12, SEPTIN6, SEPTIN2 and probably SEPTIN4 at the sperm annulus which is required for the structural integrity and motility of the sperm tail during postmeiotic differentiation (PubMed:25588830).

Cellular Location

Cytoplasm. Cytoplasm, cytoskeleton, spindle Chromosome, centromere, kinetochore Cleavage furrow. Midbody. Cell projection, cilium, flagellum. Note=In metaphase cells, localized within the microtubule spindle. At the metaphase plate, in close apposition to the kinetochores of the congressed chromosomes. In cells undergoing cytokinesis, localized to the midbody, the ingressing cleavage furrow, and the central spindle. Found in the sperm annulus

(PubMed:25588830).

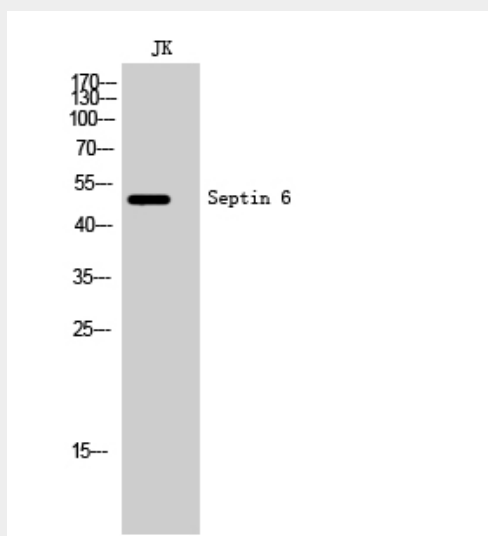
Tissue Location

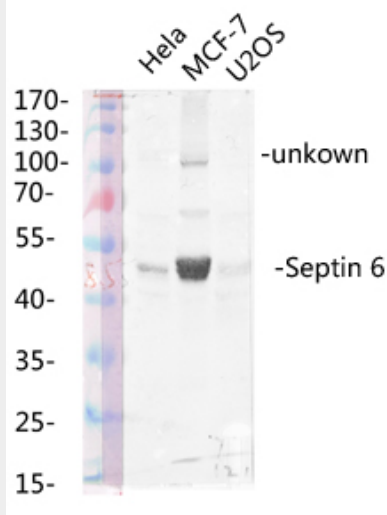
Widely expressed..

Septin 6 Polyclonal Antibody - Protocols

Provided below are standard protocols that you may find useful for product applications.

- [Western Blot](#)
- [Blocking Peptides](#)
- [Dot Blot](#)
- [Immunohistochemistry](#)
- [Immunofluorescence](#)
- [Immunoprecipitation](#)
- [Flow Cytometry](#)
- [Cell Culture](#)

Septin 6 Polyclonal Antibody - Images



Septin 6 Polyclonal Antibody - Background

Filament-forming cytoskeletal GTPase. Required for normal organization of the actin cytoskeleton. Involved in cytokinesis. May play a role in HCV RNA replication. Forms a filamentous structure with SEPT12, SEPT6, SEPT2 and probably SEPT4 at the sperm annulus which is required for the structural integrity and motility of the sperm tail during postmeiotic differentiation (PubMed:25588830).