

**Septin 7 Polyclonal Antibody**  
**Catalog # AP72434****Specification**

---

**Septin 7 Polyclonal Antibody - Product Information**

Application	WB, IHC-P
Primary Accession	<a href="#">Q16181</a>
Reactivity	Human, Mouse, Rat
Host	Rabbit
Clonality	Polyclonal

**Septin 7 Polyclonal Antibody - Additional Information****Gene ID** 989**Other Names**

SEPT7; CDC10; Septin-7; CDC10 protein homolog

**Dilution**

WB~~Western Blot: 1/500 - 1/2000.IHC-p:1:50-300 ELISA: 1/20000. Not yet tested in other applications.

IHC-P~~N/A

**Format**

Liquid in PBS containing 50% glycerol, 0.5% BSA and 0.09% (W/V) sodium azide.

**Storage Conditions**

-20°C

**Septin 7 Polyclonal Antibody - Protein Information****Name** SEPTIN7 ([HGNC:1717](#))**Synonyms** CDC10, SEPT7**Function**

Filament-forming cytoskeletal GTPase. Required for normal organization of the actin cytoskeleton. Required for normal progress through mitosis. Involved in cytokinesis. Required for normal association of CENPE with the kinetochore. Plays a role in ciliogenesis and collective cell movements. Forms a filamentous structure with SEPTIN12, SEPTIN6, SEPTIN2 and probably SEPTIN4 at the sperm annulus which is required for the structural integrity and motility of the sperm tail during postmeiotic differentiation (PubMed:<a href="http://www.uniprot.org/citations/25588830" target="\_blank">25588830</a>).

**Cellular Location**

Cytoplasm. Chromosome, centromere, kinetochore Cytoplasm, cytoskeleton, spindle Cleavage furrow. Midbody. Cytoplasm, cytoskeleton, cilium axoneme. Cell projection, cilium, flagellum. Note=Distributed throughout the cytoplasm in prometaphase cells. Associated with the spindle

during metaphase. Associated with the central spindle and at the cleavage furrow in anaphase cells. Detected at the midbody in telophase Associated with actin stress fibers (By similarity). Found in the sperm annulus (PubMed:25588830). {ECO:0000250, ECO:0000269|PubMed:25588830}

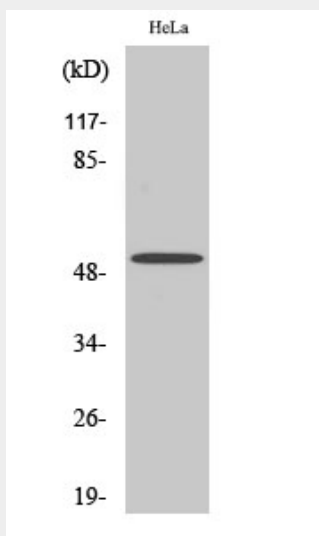
**Tissue Location**

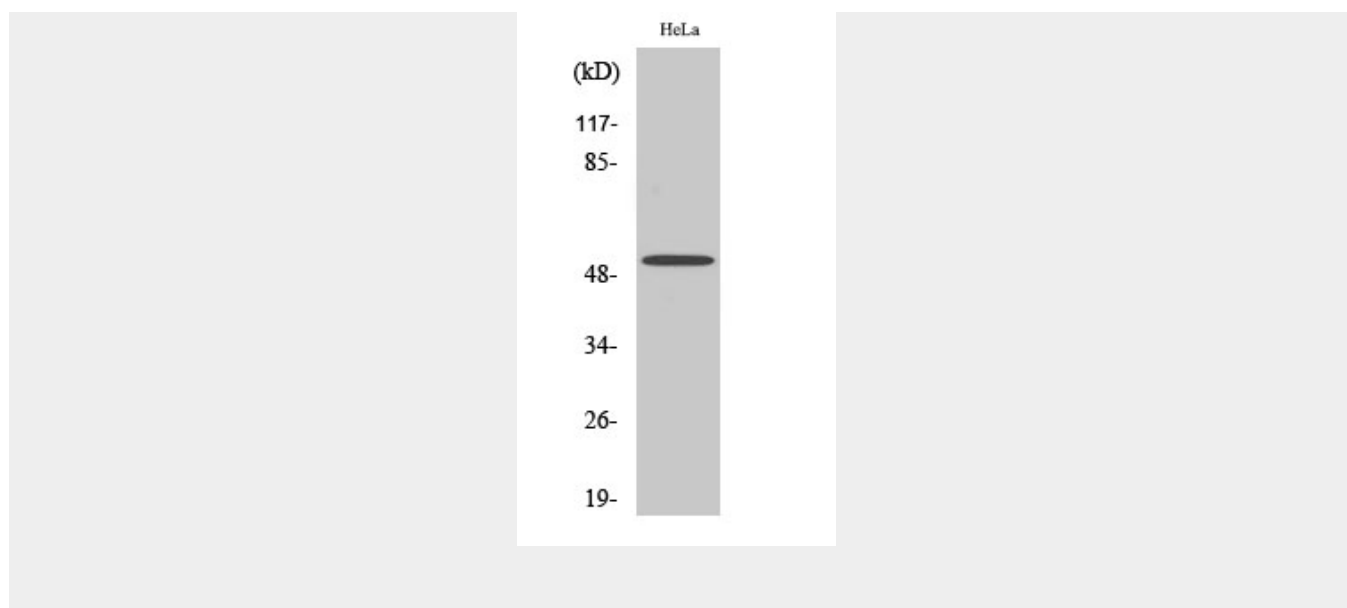
Widely expressed..

**Septin 7 Polyclonal Antibody - Protocols**

Provided below are standard protocols that you may find useful for product applications.

- [Western Blot](#)
- [Blocking Peptides](#)
- [Dot Blot](#)
- [Immunohistochemistry](#)
- [Immunofluorescence](#)
- [Immunoprecipitation](#)
- [Flow Cytometry](#)
- [Cell Culture](#)

**Septin 7 Polyclonal Antibody - Images**



### Septin 7 Polyclonal Antibody - Background

Filament-forming cytoskeletal GTPase. Required for normal organization of the actin cytoskeleton. Required for normal progress through mitosis. Involved in cytokinesis. Required for normal association of CENPE with the kinetochore. Plays a role in ciliogenesis and collective cell movements. Forms a filamentous structure with SEPT12, SEPT6, SEPT2 and probably SEPT4 at the sperm annulus which is required for the structural integrity and motility of the sperm tail during postmeiotic differentiation (PubMed:25588830).