

Septin 8 Polyclonal Antibody
Catalog # AP72435**Specification**

Septin 8 Polyclonal Antibody - Product Information

Application	WB
Primary Accession	Q92599
Reactivity	Human, Mouse, Rat
Host	Rabbit
Clonality	Polyclonal

Septin 8 Polyclonal Antibody - Additional Information**Gene ID** 23176**Other Names**

SEPT8; KIAA0202; Septin-8

Dilution

WB~~Western Blot: 1/500 - 1/2000. ELISA: 1/10000. Not yet tested in other applications.

Format

Liquid in PBS containing 50% glycerol, 0.5% BSA and 0.09% (W/V) sodium azide.

Storage Conditions

-20°C

Septin 8 Polyclonal Antibody - Protein Information**Name** SEPTIN8 ([HGNC:16511](#))**Function**

Filament-forming cytoskeletal GTPase (By similarity). May play a role in platelet secretion (PubMed:15116257). Seems to participate in the process of SNARE complex formation in synaptic vesicles (By similarity).

Cellular Location

Cytoplasm {ECO:0000250|UniProtKB:B0BNF1}. Cytoplasm, cytoskeleton. Synapse {ECO:0000250|UniProtKB:B0BNF1}. Cell projection, axon {ECO:0000250|UniProtKB:B0BNF1}. Cytoplasmic vesicle, secretory vesicle, synaptic vesicle membrane {ECO:0000250|UniProtKB:B0BNF1}. Presynapse {ECO:0000250|UniProtKB:B0BNF1}. Note=Expressed in axons of immature neurons, localizes to synapses in mature neurons (By similarity). In platelets, found in areas surrounding alpha-granules (PubMed:15116257) {ECO:0000250|UniProtKB:B0BNF1, ECO:0000269|PubMed:15116257}

Tissue Location

Widely expressed, including in brain, heart and platelets; most abundant in aorta. Isoform 2 is

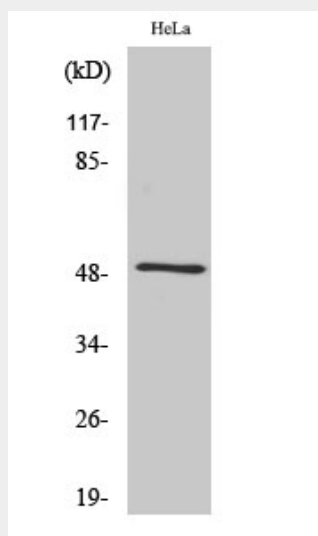
expressed at low levels in specific brain areas, such as occipital pole, frontal lobe, temporal lobe and putamen. Isoform 1 and 3 are highly expressed in specific brain areas, such as occipital pole, frontal lobe, temporal lobe and putamen. Isoform 2 is highly expressed in prostate, testis and ovary. Isoform 1 and isoform 3 are expressed at low levels in prostate, testis and ovary.

Septin 8 Polyclonal Antibody - Protocols

Provided below are standard protocols that you may find useful for product applications.

- [Western Blot](#)
- [Blocking Peptides](#)
- [Dot Blot](#)
- [Immunohistochemistry](#)
- [Immunofluorescence](#)
- [Immunoprecipitation](#)
- [Flow Cytometry](#)
- [Cell Culture](#)

Septin 8 Polyclonal Antibody - Images



Western Blot analysis of various cells using Septin 8 Polyclonal Antibody diluted at 1:2000

Septin 8 Polyclonal Antibody - Background

Filament-forming cytoskeletal GTPase (By similarity). May play a role in platelet secretion (PubMed:15116257). Seems to participate in the process of SNARE complex formation in synaptic vesicles (By similarity).