

**STK35 Antibody (Center)**  
**Purified Rabbit Polyclonal Antibody (Pab)**  
**Catalog # AP7243c****Specification**

---

**STK35 Antibody (Center) - Product Information**

|                   |                        |
|-------------------|------------------------|
| Application       | WB, IHC-P,E            |
| Primary Accession | <a href="#">Q8TDR2</a> |
| Other Accession   | <a href="#">Q80ZW0</a> |
| Reactivity        | Human, Mouse           |
| Host              | Rabbit                 |
| Clonality         | Polyclonal             |
| Isotype           | Rabbit IgG             |
| Calculated MW     | 58051                  |
| Antigen Region    | 374-404                |

**STK35 Antibody (Center) - Additional Information****Gene ID** 140901**Other Names**

Serine/threonine-protein kinase 35, CLP-36-interacting kinase 1, CLIK-1, PDLIM1-interacting kinase 1, Serine/threonine-protein kinase 35 L1, STK35, CLIK1, PDIK1, STK35L1

**Target/Specificity**

This STK35 antibody is generated from rabbits immunized with a KLH conjugated synthetic peptide between 374-404 amino acids from the Central region of human STK35.

**Dilution**

WB~~1:1000  
IHC-P~~1:50~100

**Format**

Purified polyclonal antibody supplied in PBS with 0.09% (W/V) sodium azide. This antibody is prepared by Saturated Ammonium Sulfate (SAS) precipitation followed by dialysis against PBS.

**Storage**

Maintain refrigerated at 2-8°C for up to 2 weeks. For long term storage store at -20°C in small aliquots to prevent freeze-thaw cycles.

**Precautions**

STK35 Antibody (Center) is for research use only and not for use in diagnostic or therapeutic procedures.

**STK35 Antibody (Center) - Protein Information****Name** STK35

**Synonyms** CLIK1, PDIK1, STK35L1

**Cellular Location**

Nucleus. Nucleus, nucleolus. Cytoplasm. Note=When associated with PDLIM1, it is mostly found in cytoplasm, localized to actin stress fibers (PubMed:11973348). However, PubMed:19756140 detected STK35 only in the nucleus, and the presence of PDLIM1 had no influence on its location.

**Tissue Location**

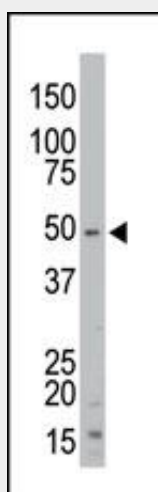
Expressed in testis.

**STK35 Antibody (Center) - Protocols**

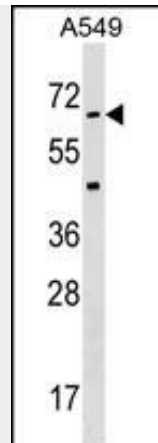
Provided below are standard protocols that you may find useful for product applications.

- [Western Blot](#)
- [Blocking Peptides](#)
- [Dot Blot](#)
- [Immunohistochemistry](#)
- [Immunofluorescence](#)
- [Immunoprecipitation](#)
- [Flow Cytometry](#)
- [Cell Culture](#)

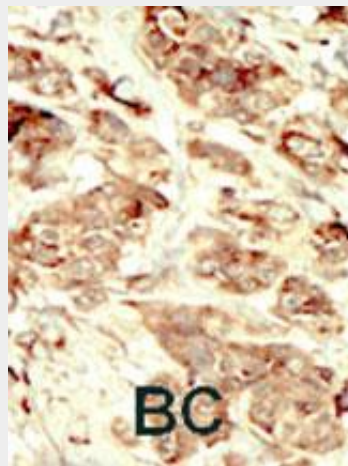
**STK35 Antibody (Center) - Images**



The anti-STK35 Pab (Cat. #AP7243c) is used in Western blot to detect STK35 in mouse kidney tissue lysate.



STK35 Antibody (C255) (Cat. #AP7243c) western blot analysis in A549 cell line lysates (35ug/lane). This demonstrates the STK35 antibody detected the STK35 protein (arrow).



Formalin-fixed and paraffin-embedded human cancer tissue reacted with the primary antibody, which was peroxidase-conjugated to the secondary antibody, followed by DAB staining. This data demonstrates the use of this antibody for immunohistochemistry; clinical relevance has not been evaluated. BC = breast carcinoma; HC = hepatocarcinoma.

#### **STK35 Antibody (Center) - Background**

STK35 can interact with PDLIM1/CLP-36 in the cytoplasm and localize to actin stress fibers. The encoded kinase may be a regulator of actin stress fibers in nonmuscle cells. This protein has also been found in the nucleus.

#### **STK35 Antibody (Center) - References**

Vallenius, T., et al., J. Cell. Sci. 115 (Pt 10), 2067-2073 (2002).